

Our Lady of Peace Catholic Primary and Nursery School



Year 6

Lenten 1

Homework Booklet

Welcome to your homework booklet for this half term.

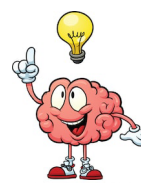


Times Tables Rockstars

Every Friday, you will be set **20 sessions** on Times Tables Rockstars (each session lasts one minute). These must be completed by **Wednesday morning at 8.30am**.

Your teacher will check that these sessions have been completed on Wednesday morning during registration.

You may choose to complete all 20 minutes in one sitting, or spread it out over the five days, which works out at four minutes per day.



Brain Builders

In RE this half term, we are learning about the Seven Signs of Jesus's Divinity from the Gospel of John.

Your project is to choose one of these signs and represent it in a way of your choice. This could be done in the form of artwork (using whichever media you like), a comic book, a poem, a modernised retelling – or anything else that takes your fancy!

Please be as creative as you can. House points will be awarded for best efforts.

Due date: **Monday 9th February 2026**



Spellings

Week 1

Friday 9th
January

The ‘i’ sound spelt as a ‘y’

Rule: Where there is an ‘i’ sound in the word, it is spelt with the letter ‘y’.

Examples: myth, pyramid, Egypt, symbol, system

Look	Say	Cover	Write	Check	Write	Check
Oxygen						
Gym						
Pyramid						
Hymn						
Crystal						
Typical						
Syrup						
Myth						

You will be tested on these 8 words, plus 2 others that follow the same rule.

Sentence practice: Now use each spellings in a sentence.

- 1) _____
- 2) _____
- 3) _____
- 4) _____
- 5) _____
- 6) _____
- 7) _____
- 8) _____



Spellings

Week 2

Friday 16th

January

The ‘uh’ sound spelt as a ‘ou’

Rule: Where there is an ‘uh’ sound in the word, it is spelt with the letter ‘ou’.

Examples: touch, enough, country, trouble, young, tough

Look	Say	Cover	Write	Check	Write	Check
Touch						
Double						
Courage						
Couple						
Enough						
Country						
Rough						
Double						

You will be tested on these 8 words, plus 2 others that follow the same rule.

Sentence practice: Now use each spellings in a sentence.

- 1) _____
- 2) _____
- 3) _____
- 4) _____
- 5) _____
- 6) _____
- 7) _____
- 8) _____



Spellings

Week 3
Friday 23rd
January

Endings spelt –sure or –ture

Rule: When the ending sounds like ‘zh’, use –sure. When the ending sounds like ‘tch’, use –ture.

Examples: measure, creature, nature, adventure

Look	Say	Cover	Write	Check	Write	Check
Measure						
Treasure						
Pleasure						
Enclosure						
Creature						
Furniture						
Picture						
Nature						

You will be tested on these 8 words, plus 2 others that follow the same rule.

Sentence practice: Now use each spellings in a sentence.

- 1) _____
- 2) _____
- 3) _____
- 4) _____
- 5) _____
- 6) _____
- 7) _____
- 8) _____



Spellings

Week 4
Friday 30th
January

Endings spelt –sure or –ture

Rule: When the ending sounds like ‘zh’, use –sure. When the ending sounds like ‘tch’, use –ture.

Examples: measure, creature, nature, adventure

Look	Say	Cover	Write	Check	Write	Check
Measure						
Treasure						
Pleasure						
Enclosure						
Creature						
Furniture						
Picture						
Nature						

You will be tested on these 8 words, plus 2 others that follow the same rule.

Sentence practice: Now use each spellings in a sentence.

- 1) _____
- 2) _____
- 3) _____
- 4) _____
- 5) _____
- 6) _____
- 7) _____
- 8) _____



Spellings

Week 5

Friday 6th
February

Endings spelt –sion, -ssion, –tion and -cian

Rule: If the root ends in ‘d’ or ‘se’, use –sion. -tion is used when the root ends in ‘t’ or ‘te’. If the root word ends in ‘ss’, -ssion is used. If the root word ends in ‘c’, ‘cian’ is used.

Look	Say	Cover	Write	Check	Write	Check
Invention						
Injection						
Confession						
Discussion						
Expansion						
Tension						
Musician						
Politician						

You will be tested on these 8 words, plus 2 others that follow the same rule.

Sentence practice: Now use each spellings in a sentence.

- 1) _____
- 2) _____
- 3) _____
- 4) _____
- 5) _____
- 6) _____
- 7) _____
- 8) _____



Spellings

Week 6

Friday 13th

February

Endings spelt –sion, -ssion, –tion and -cian

Rule: If the root ends in ‘d’ or ‘se’, use –sion. -tion is used when the root ends in ‘t’ or ‘te’. If the root word ends in ‘ss’, -ssion is used. If the root word ends in ‘c’, ‘cian’ is used. *Continued from last week, as there are so many words!*

Look	Say	Cover	Write	Check	Write	Check
Action						
Hesitation						
Expression						
Admission						
Comprehension						
Extension						
Electrician						
Magician						

You will be tested on these 8 words, plus 2 others that follow the same rule.

Sentence practice: Now use each spellings in a sentence.

- 1) _____
- 2) _____
- 3) _____
- 4) _____
- 5) _____
- 6) _____
- 7) _____
- 8) _____