


# Winter Break Activities 2024

From Slough Family Information Service



 01753 476589

 FIS@slough.gov.uk

 [www.sloughfamilyservices.org.uk](http://www.sloughfamilyservices.org.uk)

[www.slough.gov.uk](http://www.slough.gov.uk)  
**Slough**  
Borough Council

# WINTER HOLIDAYS ARE HERE!

The Christmas winter holidays are here and the Slough Family Information Service and HAF team, are here to give you information on amazing activities and fun things to do in the borough for children, young people, and families.

We hope it's a warm, safe, and exciting break for you!



Activities which have the Local Offer symbol are suitable for children and young people with Special Educational Needs and Disabilities (SEND).



Slough  
Holiday Activities  
and Food Programme

Where activities have the Slough Holiday Activities and Food Programme logo eligible children can access four-hour sessions, for four days over the Christmas break at no cost. The sessions include healthy meal advice to families on how to source, prepare, and cook nutritious food, and a variety of exciting creative activities.

If you have any queries regarding the HAF programme, please call Slough Family Information Service on 01753 476589.

---

For further information and more activities visit  
[www.sloughfamilyservices.org.uk](http://www.sloughfamilyservices.org.uk)

## Antz Kidz Activity Centre at Slough Museum

**Location:**

72 Buckingham Ave, Slough, SL1 4PN

**T:** For bookings call 07598 062569 (limited places available)

**E:** antzkidz@yahoo.com

**To book:** <https://sloughhaf.org.uk>



**Date:** 23, 24, 30, and 31 December.

**Time:** 9am-3pm for HAF bookings, 9am-6pm for fee paying spaces.

**Age:** 5-11 years, secondary school aged children also welcome.

**Cost:** Free with allocated HAF codes. For fee paying spaces please contact the provider.

**Activities:** Offering activities such as arts and crafts, music, salsa, street dance, cookery, park fun and water fun.

## Art Classes Group

**Location:**

Observatory Shopping Centre, above Primark, Slough High Street, Slough, SL1 1LN

**T:** Marinela Caldarus on 07501 644537

**E:** info@artclassesgroup.com

**W:** [www.artclassesgroup.com/whats-on/](http://www.artclassesgroup.com/whats-on/)

**To book:** <https://sloughhaf.org.uk>



**Date:** 23, 27, 30 December and 3 January 2025.

**Time:** 12noon-4pm.

**Age:** Places available for primary and secondary school children 5-16 years.

**Cost:** Free with allocated HAF codes. For fee paying spaces please contact the provider.

**Activities:** This winter break, join the Art Classes Group for amazing art activities: painting, drawing, crafts, games, and healthy food.



Antz Kidz Activity Centre at Slough Museum



Art Classes Group

## Community Detached Team

**Location:**

Salt Hill Activity Centre, Bath Rd, Slough, SL1 3SS

**T:** 07444 090691

**E:** [cassandra.vaughan@slough.gov.uk](mailto:cassandra.vaughan@slough.gov.uk)

**To book:** <https://sloughhaf.org.uk>



**Date:** 23, 27, 30 December and 3 January 2025.

**Time:** 10am-2.30pm.

**Age:** 11-16 years.

**Activities:** We offer physical activities including football, rounders, trampolining, ice-skating, cricket and VR activities. We will also run some artwork classes including graffiti and t-shirt printing, as well as wellbeing sessions.

## Crossroads Care Slough

**Location:**

Langley Scout Hut, Gosling Road, Langley, Slough, SL3 7TP

**T:** 01753 525796

**E:** [info@sloughcrossroads.org.uk](mailto:info@sloughcrossroads.org.uk)

**W:** [www.sloughcrossroads.org.uk](http://www.sloughcrossroads.org.uk)

**To book:** Contact the provider



**Date:** Wednesdays and Thursdays.

**Time:** 10am-2pm.

**Age:** From 8 years old upwards.

**Cost:** £60 per session.

**Activities:** Support day hub, arts and crafts, games, music, engaging group activities: From indoor games to outdoor adventures, there's always something fun to do.

Additionally...

Bring your own lunch or enjoy provided tea, coffee and snacks. Supportive staff and friendly volunteers are always here to help.

## GEMS, Bear Clubs

**Location:**

Heathfield School, London Road, Ascot, SL5 8BQ

**T:** For booking call 0800 999 1342

**W:** [www.Gems4Health.co.uk](http://www.Gems4Health.co.uk)

**E:** [Gems.4Health@nhs.net](mailto:Gems.4Health@nhs.net)



**Date:** Monday 16 December: Big on Bouncing - Slough.

**Time:** First and third Friday of the month, 4-5pm.

**Age:** 5-10 years.

**Cost:** Check with provider.

**Activities:** Christmas Crafts for children with or likely to have ADHD and/or autism and living in East Berkshire. Please note activities may be subject to change.

## Get Active - Cippenham

**Location:**

Cippenham School, Elmshott Lane, Slough, SL1 5QS

**T:** 01344 860868

Both fee paying and HAF will be able to book through the company website or by telephone.

**To book:** <https://sloughhaf.org.uk>



**Date:** 23, 30 December, 2 and 3 January 2025.

**Time:** 9am-1pm for HAF Children, 8am-6pm for fee paying spaces.

**Age:** 4-11 years.

**Cost:** Free with allocated HAF codes. For fee paying spaces please contact the provider.

**Activities:** Join us this winter break and take part in activities such as football, arts and crafts, basketball, dance, music, cooking, dodgeball, circus and multi sports.

## Global Learn to Cook

**Location:**

Kedermister Hall, Langley

**T:** Rob Deeks on 01753 574780

**E:** [info@aiksaath.com](mailto:info@aiksaath.com)

**To book:** Please email or call the provider

**To book:** <https://sloughhaf.org.uk>



**Date:** 23, 24, 30, and 31 December.

**Time:** 11am-3pm.

**Age:** 11-16 years.

**Activities:** Learn to cook food from around the world in a safe and supportive environment with our award-winning chef. The Holiday Activities and Food (HAF) programme provides free enjoyable activities and nutritious meals for young people who are in receipt of benefits-related free school meals. Our HAF programme provides young people with the opportunity to learn how to cook with Chef Kevin Muhammad.

## Jam Coding

**Location:**

St Andrew's Methodist Church, 2 Merton Road, Slough SL1 1QW

**W:** [jamcoding.com/contact/](http://jamcoding.com/contact/)

**To book:** <https://sloughhaf.org.uk>



**Date:** 23, 24 December, and 2, 3 January 2025.

**Time:** 9am-1pm.

**Age:** 11-16 years.

**Activities:** Digital safety workshops for our budding coders and computing experts. We run sessions in game-building, robotics, code quests, digital safety, and citizenship, stop motion animation, Minecraft challenges, and much more.

## Jump In by AirHop Slough

**Location:**

550 Dundee Road, Slough, SL1 4LE

**T:** 01234 923732

**E:** hello@gojumpin.com

**W:** [www.gojumpin.com](http://www.gojumpin.com)

**To book:** Contact provider or book via website.



**Date:** Open throughout the Christmas holidays except bank holidays.

**Time:** 9am-6pm (9am-8pm Friday and Saturday).

**Age:** 6 months to 6 years, main arena 6+ years.

**Cost:** Various, please see website for further information.

**Activities:** Soft play, cafe, trampolining, parties, racing slides, bungee tower, foam pit, dodgeball. Relaxed sessions available. Jump-in runs sensory sessions for families of children with ASD with soft lighting and soothing music which creates a calm, safe, autism friendly sensory room.

## Kidz Enterprise LTD

**Location:**

Cippenham School, Dennis Way, Cippenham, Slough, SL1 5JP

**T:** 07973 791419

**E:** mail@kidzenterprise.co.uk

**W:** [www.kidzenterprise.co.uk](http://www.kidzenterprise.co.uk)

**To book:** Contact provider.



**Dates:** 23, 24, 30 and 31 December.

**Time:** Monday 23 December: Christmas Pantomime Trip - to see "Sleeping Beauty" at Woking Theatre, leading the cast will be stage, screen and pantomime legend, the one-and-only Christopher Biggins as The Spirit of Dreams, along with Steps singer and musical theatre star Faye Tozer as Carabosse and illusionist, puppeteer and actor Richard Cadell (accompanied by his friend Sooty!) as Muddles.

Tuesday 24 December: Christmas Fun Day includes a full Christmas lunch (main club available from 7.30am-4.30pm, HAF available from 8.45am-4pm due to the Christmas Party).

Monday 30 December: Mission Impossible (main club available from 7.30am-6pm).

Tuesday 31 December: It's Party Time (main club available from 7.30am-4.30pm).

**Age:** 4-12 years, must already be attending reception class.

**Cost:** Free with allocated HAF codes. Full price from £30.95 per day (group trip day from £40 due to additional coach and entrance costs). Weekly and sibling discounts available.

**Activities:** Pantomime trip, Christmas Fun Day includes a full Christmas lunch, Mission Impossible day and It's Party Time day!

## LEO'S Circus Camp

**Location:**

Singh Sabha Sports Centre, Stoke Poges Lane, Slough, SL1 3LW

**T:** Alexander Leo on 07395 338476

**E:** leos.circus.slough@gmail.com

**W:** [www.leoscircus.co.uk](http://www.leoscircus.co.uk)

**To book:** <https://sloughhaf.org.uk>

Places are extremely limited so booking in advance is essential.



**Date:** 23, 24, 30 and 31 December.

**Time:** 1-5pm.

**Age:** 6-15 years.

**Cost:** Free with allocated HAF codes (if your child is not on free school meals and would like to sign up please contact the team).

**Activities:** Allow your children to immerse themselves in the world of circus and be captivated by our fun and exciting schedule of circus activities! Children will experience intensive circus training with 3-hour daily classes in aerial silks, hoop, rope and trapeze. They will also learn the art of Poi, juggling, hula hooping, acro balance and gymnastics! They'll work on their coordination, strength, listening skills, confidence and more with jam packed fun and exciting classes. We'll also be teaching them about healthy food and providing a hot lunch on the day! We can't wait to see you there!

## Media Monday by YES

**Location:**

The YES Shop, Slough High Street, SL1 1LN (next to Subway)

**T:** 01753 553374

**E:** [info@yesslough.org.uk](mailto:info@yesslough.org.uk)

**To book:** Contact provider.



**Date:** Mondays over the holidays.

**Time:** 5-6.30pm.

**Age:** 11-19 years (up to 25 with SEND).

**Cost:** Free.

**Activities:** Want to be a filmmaker and take part in some practical filmmaking? Want to find out how your hobby can become your career? Join us to make new friends, learn new skills and access the support and equipment needed to make digital projects from podcast to animations.

## Powerleague Slough

**Location:**

Back of Slough & Eton School, Ragstone Road, Slough, SL1 2PU

**T:** 01753 824422

**E:** [enquiries@powerleague.co.uk](mailto:enquiries@powerleague.co.uk)

**W:** [www.powerleague.co.uk/kids/kids-camps](http://www.powerleague.co.uk/kids/kids-camps)

**Date:** 23, 24, 27, 30, 31 December and 2, 3 January.

**Time:** 9am-3pm, early drop off and late pick up options.

**Age:** 5-14 years.

**Cost:** £15 for the day with a lunch option at £5.95.

**Activities:** Children's football camps.

## Salt Hill Activity Centre (Everyone Active)

**Location:**

Bath Road, Slough, SL1 3SS

**T:** 01753 969720

**W:** [www.everyoneactive.com/centre/salt-hill-activity-centre](http://www.everyoneactive.com/centre/salt-hill-activity-centre)

**Date:** Open over Christmas holidays, only closed Christmas day and New Years Day.

**Time:** 10am-10pm.

**Age:** Different activities for all ages.

**Cost:** Current offers from Monday-Friday £5 per activity: bowling, trampolining and soft play. On Sundays from 10am-12noon, £6 for each game of bowling. Many different packages, please see online or contact for more information.

**Activities:** Salt Hill Activity Centre is an all-weather indoor fun and adventure centre for the whole family. The Centre offers a range of exciting activities, including: ten pin bowling, trampoline park, virtual reality, golf simulator, escape rooms, an adventure soft play zone for the little ones.

Salt Hill Activity Centre offers inclusive ten pin bowling and soft play sessions.

## Script Saturday, by YES

**Location:**

The YES Shop, Slough High Street,  
SL1 1LN (next to Subway)

**T:** 01753 553374

**E:** [info@yesslough.org.uk](mailto:info@yesslough.org.uk)

**To book:** Contact provider.



**Date:** Saturdays over the holidays.

**Time:** 1.30pm-5.30pm.

**Age:** 11-19 years (up to 25 with SEND).

**Cost:** Free.

**Activities:** A great story makes great media, and Script Saturday can offer you practical writing skills, and advice on how to develop and pitch your ideas. With the opportunity to collaborate with other young artists and filmmakers, this is a great way for any budding writer to spend their Saturday.

## Slough Ice Arena (Everyone Active)

**Location:**

Montem Lane, Slough, SL1 2QG

**T:** 01753 969710

**W:** [www.everyoneactive.com/centre/slough-ice-arena/](http://www.everyoneactive.com/centre/slough-ice-arena/)

**To book:** Contact provider.

**Date:** Open over Christmas holidays.

**Time:** Contact provider for sessions.

**Age:** Different activities for all ages.

**Cost:** Contact provider for details.

**Activities:** Open for everyone to enjoy the ice, whether you're a beginner, or a seasoned skater. As well as the ice, there's also a well-equipped gym for you to enjoy, alongside a brand-new climbing wall, dedicated Clip 'n' Climb wall and café.

## Slough Music

**Location:**

Grove Academy, Ladbrooke Road, Slough,  
SL1 2SR

**To book:** <https://sloughhaf.org.uk>

**Date:** 23, 24, 30 and 31 December.

**Time:** 10am-2pm.

**Age:** 4-11 years.

**Cost:** Free with allocated HAF codes. For fee paying spaces please contact the provider.

**Activities:** Enriching and engaging activities such as Christmas arts and crafts, Santa sports days. Christmas dance workshops, and musical ensembles.





# Family Participation Day

**Saturday 14 December, 1-4pm**

For parent/carers children and young people with additional needs and siblings. Sensory Room will be open. Places need to be booked in advance by contacting us Stoke Park Trust (PALS) 225-227 Northern Road, SL1 1LU. Free gift for parent/carers/children/young people. Free entry. Tombola, buffet lunch and chocolate for children.



# Coffee Day at Special Voices

**Coffee & Mince Pies, Thursday 12 December**

Drop-in anytime between 10am-1pm  
Cippenham Baptist Church Hall, Elmshott Lane, SL1 5QS.  
Free gift bag and free tombola on entry, always room for cake!!  
Our guests will be: SENDIASS (Special Educational Needs/Disability, Information, Advice & Support Service).

**Website:** [www.specialvoices.co.uk](http://www.specialvoices.co.uk)

**Email:** [info@specialvoices.co.uk](mailto:info@specialvoices.co.uk)

**Telephone:** 07990 693439

**X @** specialvoices

**Donate:** [Localgiving.com](http://Localgiving.com) - Special Voices

## Special Voices

**Location:**

Cippenham Baptist Church,  
11 Elmshott Lane, Slough, SL1 5QS

**T:** 07990 693439

**E:** info@specialvoices.co.uk

**To book:** Book early by contacting the provider.



**Date:** Coffee Day at special voices.

Coffee and Mince Pies - **Thursday 12 December**. Drop-in anytime between 10am-1pm. Cippenham Baptist Church Hall, Elmshott Lane, SL1 5QS. Free gift bag and free tombola on entry, always room for cake!!

Family Participation Day - **Saturday 14 December**, 1-4pm. For parent/carers children and young people with additional needs and siblings - Sensory Room will be open. Places need to be booked in advance by contacting us.

**Age:** Families, parent/carers, young people.

**Cost:** Free.

## Sports Inc @ Powerleague

**Location:**

Powerleague, Slough and Eton School, Ragstone Road, Slough, SL1 2PU

**T:** Tony Thompson, Director on 07956 359377

**E:** info@sportsinc.org.uk

**W:** [www.sportsinc.org.uk](http://www.sportsinc.org.uk)

**To book:** <https://sloughhaf.org.uk>



**Date:** 23, 27, 30 December, and 2 January 2025.

**Time:** 10.30am-2.30pm.

**Age:** 14-16 years.

**Cost:** Free with allocated HAF codes.

**Activities:** 5-a-side football for secondary school children. Daily friendly tournaments for boys and girls. Healthy hot lunch available each day.



## Swipe

### Location:

See details opposite

T: 07776 997255

To book: <https://sloughhaf.org.uk>



**Date: 23 December, Science Museum Trip**

9.45am - meet at YES Space on Slough High Street (Address: Unit 2, Queensmere Shopping Centre, Slough, SL1 1LN). Return 4pm - parents will get a text message to confirm.

**27 December, Christmas Zombie Walk London Bridge Experience and London Tombs**

9.45am - meet at YES Space on Slough High Street for briefing and zombie make up (Address: Unit 2, Queensmere Shopping Centre, Slough, SL1 1LN). Return 5pm - parents will get a text message to confirm.

Flip Out Hounslow Trip: laser quest bumper cars etc.

9.45am - meet at YES Space on Slough High Street (Address: Unit 2, Queensmere Shopping Centre, Slough, SL1 1LN). Return 3pm.

Thames Valley Police Training Day

Slough Police Station - 9.45am

Slough Police Station - return 4pm

First Aid Training to a police cadet standard and some fun cadet drill training.

**Time:** See details above.

**Age:** 11-16 years.

**Activities:** Swipe is offering a range of trips, The Science Museum, The London Bridge Experience and silent disco walking tour of The Southbank, Flip Out trip, and a Thames Valley Police training day.



The Southbank, London

# Thames Valley Adventure Playground

Charity Number 1201368



**Date:** Friday 20 December, 11am-3pm Adults festive funday. £5 per person (including a gift from Father Christmas, crafts, musical bingo and refreshments).

**Saturday 21 December**, 11am-3pm Childrens festive funday. £5 per child (this will include a visit to Father Christmas, a gift, refreshments, activities, and crafts).

We will be closing for the Christmas break on Saturday 21 December, reopening on Tuesday 2-4 January. Then closing again for maintenance reopening on Tuesday 14 January.

**Time:** Our opening hours for families are Tuesdays, Wednesdays, Thursdays and Saturdays, 10am and 4pm. Christmas details as above.

**Age:** Children up to 16, adults 16 years and over.

**Cost:** Christmas costs as above. Please contact provider for other costs.

**Activities:** Supporting children and adults with special educational needs and their families. Playground is open to children and adults with all types of special need, however, mild or profound, their siblings and parents/carers.

**Location:**

Bath Road, Taplow, Maidenhead, Berks, SL6 0PR

**T:** 01628 628599

**E:** office@tvap.co.uk

**W:** [www.tvap.co.uk](http://www.tvap.co.uk)

**To book:** Both Christmas events need to be booked in advance by calling Erin on 01628 628599.

---

## Theatre Camp

**Location:**

73a Stoke Poges Lane, Slough, SL1 3NY

**E:** info@iamdesree.co.uk

**To book:** <https://sloughhaf.org.uk>



**Date:** 23, 24, 30 and 31 December.

**Time:** 10am-1pm.

**Age:** All ages.

**Activities:** Theatre and drama-based activities.

---

## Tiny Turtles

**Location:**

Upton Lea Community Centre, Wexham Road, Slough, SL2 5JW

**T:** For bookings call 07366 565447

**E:** info@tinyturtlesdaycarenursery.com

**To book:** <https://sloughhaf.org.uk>



**Date:** 30, 31 December and 2, 3 January 2025.

**Time:** 9am-1pm or 12noon-4pm.

**Age:** 4-11 years.

**Cost:** Free with allocated HAF codes. For fee paying spaces please contact the provider.

**Activities:** Sports, cooking activities, arts and crafts.

## U-Sports - Claycots Town Hall Camp

**Location:**

Town Hall Claycots Primary School, 33 Bath Road, Slough SL1 3UQ

**E:** [kat@u-sports.co.uk](mailto:kat@u-sports.co.uk)

**To book:** <https://sloughhaf.org.uk>



**Date:** 2 and 3 January 2025.

**Time:** 9am-3pm.

**Age:** 5-11 years.

**Cost:** Free with allocated HAF codes. For fee paying spaces please contact the provider.

**Activities:** We will structure the day by running an older group (Year 5/6), middle group (Year 3/4) and younger group (Year 1/2). Our intention is to allow all children access to high-quality fun activities that will get them moving throughout the day. By splitting the age groups, it allows the children to work with other children of similar ability allowing them to get the most out of the day.

## 360 Cippenham Community Centre

**Location:**

Cippenham Community Centre, 90 Earls Lane, Slough SL1 5TD

**T:** 07359 657104

**To book:** <https://sloughhaf.org.uk>



**Date:** 23, 27 December and 2, 3 January 2025.

**Time:** 9am-3pm.

**Age:** All ages.

**Cost:** Free for children/young people with HAF codes. If you are not eligible, please contact the number opposite to discuss prices.

**Activities:** Our 360 Winter camps are designed to provide the children who attend with the opportunity to learn new skills and gain information in:

- Fitness (including football, boxing, weights, martial arts, dance and team games).
- Nutrition (cooking lessons).
- Wellbeing (social media and AI navigation).

We have recently invited some exceptional role models to attend our camps who will be delivering talks on their journeys to success, because 'if children can see it, they can achieve it'.

We encourage friendship by creating groups and having games at the end of everyday that allow for the children to compete for a 360 Cup at the end of the week. (Win family meals out and days out too!)

We like to ensure that children are happy and included and if they feel uncomfortable we always have spare team members on hand to support.

## 360 Iqra School

**Location:**

Iqra School, Wexham Road, Slough SL2 5FF

**T:** 07359 657104

**To book:** <https://sloughhaf.org.uk>



**Date:** 23, 27 December and 2, 3 January 2025.

**Time:** 9.30am-2pm.

**Age:** All ages.

**Cost:** Free for children/young people with HAF codes. If you are not eligible, please contact the number opposite to discuss prices.

**Activities:** Our 360 Winter camps are designed to provide the children who attend with the opportunity to learn new skills and gain information in:

- Fitness (including football, boxing, weights, martial arts, dance and team games).
- Nutrition (cooking lessons).
- Wellbeing (social media and AI navigation).

We have recently invited some exceptional role models to attend our camps who will be delivering talks on their journeys to success, because 'if children can see it, they can achieve it'.

We encourage friendship by creating groups and having games at the end of everyday that allow for the children to compete for a 360 Cup at the end of the week. (Win family meals out and days out too!)

We like to ensure that children are happy and included and if they feel uncomfortable we always have spare team members on hand to support.



## 360 Langley Academy

**Location:**

Langley Academy, Langley Road, Langley SL3 7EF

**T:** 07359 657104

**To book:** <https://sloughhaf.org.uk>



**Date:** 23, 27 December and 2, 3 January 2025.

**Time:** 9am-3pm.

**Age:** All ages.

**Cost:** Free for children/young people with HAF codes. If you are not eligible, please contact the number opposite to discuss prices.

**Activities:** Our 360 Winter camps are designed to provide the children who attend with the opportunity to learn new skills and gain information in:

- Fitness (including football, boxing, weights, martial arts, dance and team games).
- Nutrition (cooking lessons).
- Wellbeing (social media and AI navigation).

We have recently invited some exceptional role models to attend our camps who will be delivering talks on their journeys to success, because 'if children can see it, they can achieve it'.

We encourage friendship by creating groups and having games at the end of everyday that allow for the children to compete for a 360 Cup at the end of the week. (Win family meals out and days out too!)

We like to ensure that children are happy and included and if they feel uncomfortable we always have spare team members on hand to support.

---

## 360 Manor Park Slough

**Location:**

Manor Park Community Centre, Villiers Road, Slough SL2 1NP

**T:** 07359 657104

**To book:** <https://sloughhaf.org.uk>



**Date:** 23, 27 December and 2, 3 January 2025.

**Time:** 9.30am-2pm.

**Age:** All ages.

**Cost:** Free for children/young people with HAF codes. If you are not eligible, please contact the number opposite to discuss prices.

**Activities:** Our 360 Winter camps are designed to provide the children who attend with the opportunity to learn new skills and gain information in:

- Fitness (including football, boxing, weights, martial arts, dance and team games).
- Nutrition (cooking lessons).
- Wellbeing (social media and AI navigation).

We have recently invited some exceptional role models to attend our camps who will be delivering talks on their journeys to success, because 'if children can see it, they can achieve it'.

We encourage friendship by creating groups and having games at the end of everyday that allow for the children to compete for a 360 Cup at the end of the week. (Win family meals out and days out too!)

We like to ensure that children are happy and included and if they feel uncomfortable we always have spare team members on hand to support.

# Slough's Children's Centres/Family Hubs Holiday opening



**Penn Road  
Children's Centre  
will open over the  
holiday period  
on Monday  
30 December  
from 9am-4pm.**

- **Play and Learn sessions  
9.30-11am and 1.30-3pm.**
- **Drop in and collect  
vitamins, meet with staff  
for support if you need it  
and "ask us anything".**

The hub pantry will also be open with basic food supplies, nappies, and wipes, and the centre is a warm space for families who need it.

All other centres will close at 6pm on Monday 23 December and open at 8am on Monday 6 January.



**FREE  
SESSIONS**

# Wintertime activities at Slough Libraries



It's the season to stay warm and cosy, so step inside our libraries for some family fun.

## The Curve

### Christmas choir

Enjoy the beautiful sounds of Montem Academy choir, treating us to some seasonal songs.

**Wednesday 11 December 3.45pm**

### Little Red Riding Hood story and craft

A favourite fairy tale, plus colouring and crafts.

Suitable for children aged 3-7.

**Friday 13 December 3.45-4.30pm**

### Origami

Explore the art of paper-folding with some simple designs. A creative activity that parents and children can enjoy together. Recommended age 5+.

**Wednesday 18 December 3.45-4.45pm**

### Enchanted Garden

Design a tiny fairy garden that will be the setting for your own magical tale. An inspiring creative writing session for children aged 7+.

**Saturday 21 December. Two one-hour sessions available, starting at 2pm or 3.30pm.**

Limited spaces available. Places must be booked in advance at The Curve library, or email [library@slough.gov.uk](mailto:library@slough.gov.uk)

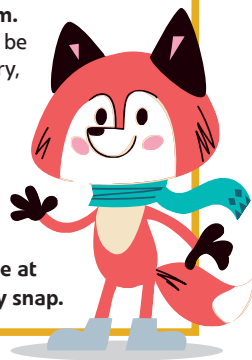
### Chess for all

**Every Saturday 11.30am-12.30pm.**

All ages and abilities welcome.

### Say cheese!

Look out for our festive photo frame at The Curve and take a happy holiday snap.



## Cippenham Library

### Pop-up play

Have fun with family board games and puzzles for little ones.

**Every first and second Saturday of the month 11am-12noon.**

**Next sessions 7 and 14 December.**

### Loads of LEGO®

Bumper boxes of bricks to build with. What will you create? For children age 5+. Please book a place in advance, in person at Cippenham Library, call 01628 661745 or email [library@slough.gov.uk](mailto:library@slough.gov.uk)

**Thursday 12 December 3.30-4.30pm.**

### Jingle Bell Rhyme-time

Shake, rattle and jingle along to the rhymes and songs at this special session, with colourful scarves to swirl. This activity is for children under 5 years.

**Thursday 19 December 11-11.30am**

### Christmas choir

Cippenham School choir will be bringing some Christmas cheer to the library with a selection of seasonal songs.

**Thursday 19 December 12.15-12.45pm**



## Langley Library

### Festive fairy tales

Enjoy listening to a well-loved tale, followed by a simple craft. Suitable for children aged 3-7.

**Saturday 21 December 11am-12noon**



To keep up to date with what's on in libraries visit:  
[www.slough.gov.uk/events](http://www.slough.gov.uk/events)

Our regular storytimes for under 5s are paused during the Christmas break. No sessions from 21 December to 4 January.

Winter is the perfect time to curl up with a book. We've got thousands to choose from, plus you can access e-books and digital audio books from home via Borrowbox with your library membership. Ask library staff for details or visit the website [www.slough.gov.uk/libraries](http://www.slough.gov.uk/libraries)

Parents/carers should stay on site. Please note the age guidance for each activity.

[www.slough.gov.uk](http://www.slough.gov.uk)  
**Slough**  
Borough Council



# WINTER HOLIDAYS PERFORMANCES AND CHRISTMAS CRAFTS

## Little Red Riding Hood

Presented by Lyngo Theatre.

**Location:** The Curve, William Street, Slough, SL1 1XY

**Date:** 16-19 December and 21-24 December.

**Time:** Various - see website [curvevenue.uk/](http://curvevenue.uk/)

**Age:** 3-8 years

**Cost:** Tickets £10, £8 for under 16s.  
Family and friends (4 people) £32.

**For booking:** please book at [curvevenue.uk/](http://curvevenue.uk/)

A wardrobe takes you to magical spaces, to all sorts of stories and wonderful places. It is a portal to the wild wood where something is roaming the forest, animals are mysteriously going missing, and a little girl receives a beautiful red cloak from her granny. Open the doors and it all comes alive through puppetry, songs and music from hidden hatches and secret compartments.

## Little Red Riding Hood craft sessions

Get crafty with our Little Red Riding Hood themed craft sessions led by Emma Duncan!

**Location:** The Curve, William Street, Slough, SL1 1XY

**Date:** Saturday 21 December to Monday 23 December.

**Time:** 1pm

**Age:** 3-8 years.

**Cost:** Tickets £4.

**Website:** [curvevenue.uk/events/little-red-riding-hood-craft-sessions](http://curvevenue.uk/events/little-red-riding-hood-craft-sessions)

**For booking:** 01753 303 035  
[boxoffice@curvevenue.uk](mailto:boxoffice@curvevenue.uk)

## Festive Fun at Cippenham Baptist: visit to Santa

**Location:** Cippenham Baptist Church, 11 Elmshott Lane, Cippenham SL1 5QS.

**Date:** Saturday 14 December.

**Time:** 12noon-4pm.

**Age:** All ages are welcome

**Cost:** £3 suggested donation payable on arrival.

**Booking:** Online at [cippenhambaptist.org](http://cippenhambaptist.org)  
Email: [office@cippenhambaptistchurch.com](mailto:office@cippenhambaptistchurch.com) or call  
01628 410 859.



## Christmas special - Cinderella on Ice

Get ready for a sparkling, icy adventure!

Slough Ice Arena is thrilled to present a magical pantomime on ice, Cinderella. Join us for a winter wonderland of laughter, music, and breath-taking skating performances.

Discover the classic tale of Cinderella with a frosty twist. Follow Cinderella as she transforms from a mistreated stepchild into a dazzling princess with the help of her Fairy Godmother. Will she find her Prince Charming at the Royal Ice Ball?

**Location:** Slough Ice Arena

**Date and Time:**

**Friday 13 December**

Doors open 6pm, show starts 7pm.

**Saturday 14 December & Sunday 15 December**

Matinee: Doors open 1pm, show starts 2pm

Evening Show: Doors open 5pm, show starts 6pm.

**Cost:** Adult £15

Child £12.50

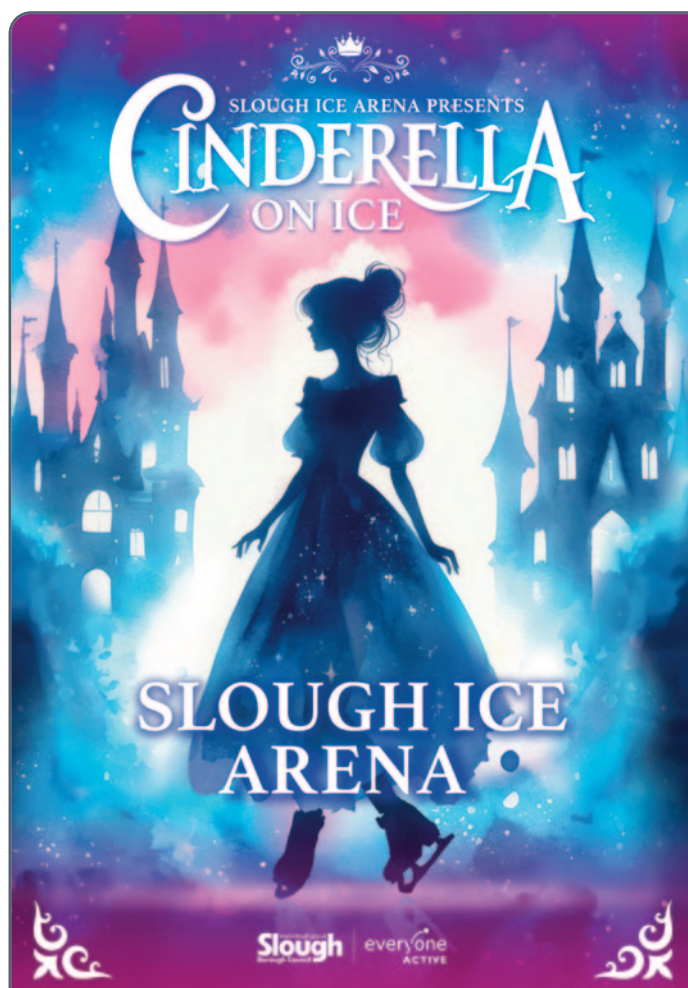
Family (2 plus 2) £50

Concession £11

Group bookings 15 or more £1 off all tickets.

**Booking:** Please book your tickets online, by phone or by emailing [Natashawilson@everyoneactive.com](mailto:Natashawilson@everyoneactive.com). We'll allocate your seat numbers and call you to confirm. Alternatively, you can choose your seats when collecting tickets from reception.

**Website:** [www.everyoneactive.com/news/cinderella-on-ice](http://www.everyoneactive.com/news/cinderella-on-ice)



Christmas Nativity Story  
& Craft Event - with Live  
Animals & Children's Activities

Slough Town  
Square

Saturday 14th  
December

12pm - 4pm in  
front of Boots



Free Event



# CHRISTMAS HOLIDAY ACTIVITIES IN NEIGHBOURING AREAS

## Pinocchio at Norden Farm

One cold night Pinocchio, Gepetto and Sonny go on a journey in search of a place to live. Little do they know the house they're staying in is a playground for their imaginations...

Join the trio as they embark on adventures to the land of play, inside a whale and much more! Will Pinocchio ever turn back into a real boy?

**Age:** 3+.

**Date:** 26 November to 28 December.

Relaxed performance: Saturday 30 November at 11am and Friday 27 December at 11am. Ideal for families with babies or toddlers and children with SEND.

**Location:** Norden Farm Centre for the Arts, Altwood Road, Maidenhead SL6 4PF

**Cost:** £16

£14 - under 16s

£56 - family and Friends (4 people)

**Booking:** Check out Pinocchio at Norden Farm - [norden.farm/events/Pinocchio-77](http://norden.farm/events/Pinocchio-77)

**Telephone:** 01628 788997

**Email:** [Boxoffice@nordenfarm.org](mailto:Boxoffice@nordenfarm.org)

## Dick Whittington at the Theatre Royal Windsor

Join Dick Whittington to check if the streets of London are really paved with gold! Enjoy comedy capers, dazzling dancers, colourful costumes and a sprinkling of magic!

**Date:** Friday 22 November to Sunday 12 January

Relaxed performance - Tuesday 26 November, 1.30pm

**Location:** Theatre Royal, 32 Thames Street, Windsor SL4 1PS

**Cost:** Tickets from £18.50

**Website:** [theatreroyalwindsor.co.uk/whats-on/](http://theatreroyalwindsor.co.uk/whats-on/)

**Telephone:** 01753 853888

## LEGOLAND® Windsor Resort

Enjoy a festive family day out with your little elves as LEGOLAND® transforms into a wintery wonderland!

The twinkly lights, giant DUPLO® Christmas tree and magical atmosphere will have the whole family full of Christmas spirit.

There is so much to do from festive shows and entertainment to LEGO® building fun and rides and attractions.

**Location:** LEGOLAND® Windsor Park Ltd, Winkfield Road, Windsor SL4 4AY

**Cost:** Check LEGOLAND® Windsor Resort for cost details.

**Telephone:** 01753 626416

**Website:** [www.legoland.co.uk/](http://www.legoland.co.uk/)

## Cinderella at Baylis Theatre

You shall go to the ball ...!

Step into the world of Cinderella at Baylis Theatre, Braywick Leisure Centre. Will Cinders escape the clutches of her ugly stepsisters and live happily ever after? Expect lots of laughter and plenty of magic.

**Date:** Saturday 14 to Tuesday 24 December.

**Location:** Baylis Theatre at Braywick Leisure Centre, Braywick Road, Maidenhead SL6 1BN

**Cost:** Tickets from £17. Family tickets available at off-peak performances.

**Website:** [www.maidenheadpanto.co.uk/](http://www.maidenheadpanto.co.uk/)

### Windsor on ice

Check out Windsor on ice for:

- festive family fun
- food and attractions
- covered ice rink and skate track.
- Meet Santa!

**Date:** 15 November to 5 January  
Tiny Tuesday and all access Wednesday sessions available.

**Location:** Alexandra Gardens, Windsor SL4 5HZ.

**Booking:** Find details at [boxoffice@windsoronice.com](mailto:boxoffice@windsoronice.com)

**Cost:** Please check online at [citiesonice.digitickets.co.uk/tickets](https://citiesonice.digitickets.co.uk/tickets)

### Christmas Cracker at Odds Farm

Take a magical stroll to the North Pole and enjoy a personal visit to meet Father Christmas!

- Make a cuddly bear.
- Choose your very own Christmas cracker present.
- Make your own reindeer food.
- Join the interactive Christmas character and musical illuminated tree shows.
- Post your letter to Father Christmas and make sure to tell him all your Christmas wishes.
- Dedicated SEN only Christmas Cracker experience sessions are on 6 and 8 December.

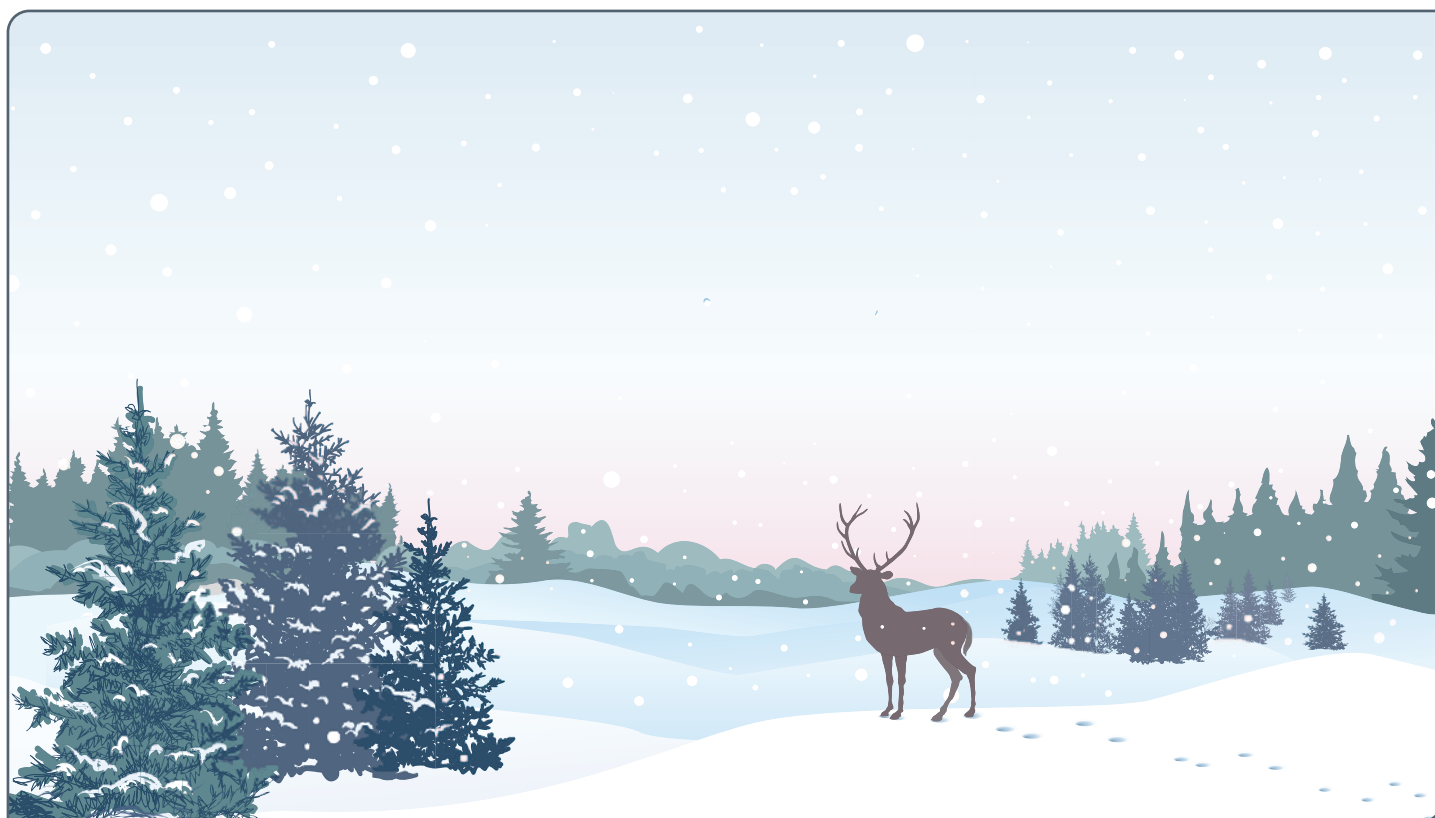
**Location:** Odds Farm Park, Woodburn Common, High Wycombe, Bucks HP10 0LX

**Cost:** Prices from £17.10 per child

**Telephone:** 01628 520 188

**Email:** [main@oddsfarm.co.uk](mailto:main@oddsfarm.co.uk)

**Website:** [www.oddsfarm.co.uk/](http://www.oddsfarm.co.uk/)



# NEARBY FAMILY INFORMATION SERVICE CONTACT DETAILS

**Buckinghamshire Family Information Service**  
[familyinfo.buckinghamshire.gov.uk/news/things-to-do-this-christmas/](http://familyinfo.buckinghamshire.gov.uk/news/things-to-do-this-christmas/)

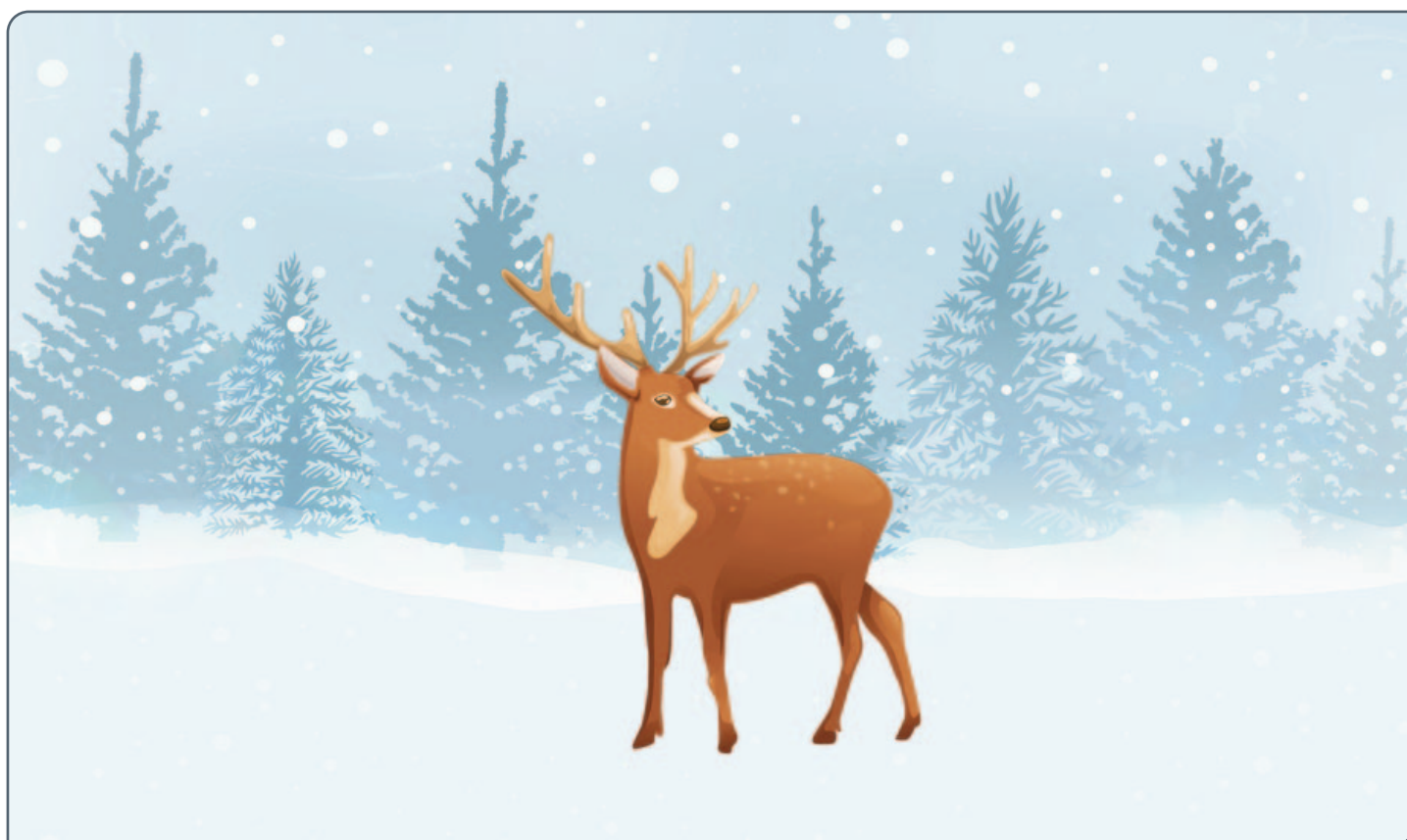
**Maidenhead's Achieving for Children Directory**  
Visit [www.windsor.gov.uk/ideas-and-inspiration/christmas](http://www.windsor.gov.uk/ideas-and-inspiration/christmas) or call the FIS on 0845 688 4944 and 01296 383065.

**Hillingdon Family Information Service**  
[discover.hillingdon.gov.uk/events](http://discover.hillingdon.gov.uk/events) or call 01895 556489.

**Cost of living tips over the holidays**  
For information for warm spaces to visit this Christmas:  
[sloughhealth.org/listing-category/warm-spaces/](http://sloughhealth.org/listing-category/warm-spaces/)

To find more information and advice on support available, including low-cost health and social activities across Slough visit: [Sloughhealth.org](http://Sloughhealth.org)

See also [www.slough.gov.uk/costofliving](http://www.slough.gov.uk/costofliving) - for a resource pack with lots of useful information.





**Disclaimer:**

This information has been collected from third party providers therefore the Slough Family Information Service and Slough Borough Council cannot accept responsibility for the accuracy of this information and recommends that parents, carers, young people, residents and professionals check with providers regarding DBS (Disclosure & Barring Service) and OFSTED registrations and CQC registrations.