



# Our Lady of Peace Catholic Primary and Nursery School

Newsletter—Friday 20th June

Volume 32

Dear Parents,

It has certainly been a hot week but I must not complain. At least it will hold out for the weekend for us to enjoy.

This Sunday in the Gospel Over 2000 years ago, Jesus saw the peoples' need, prayed and provided through an unbelievable miracle. Today He continues to provide for our hunger and need, especially in the Eucharist. Children will understand how we can offer the 'loaves and fishes' of our time, talents and prayer to Jesus. They will discover that He multiplies our offering and fills us with His love.

*'And taking the five loaves and the two fish, He looked up to Heaven and said a blessing over them. Then He broke the loaves and gave them to the disciples to set before the crowd.'*

*Luke 9:16*

Earlier this week we had our annual summer concert. It was a wonderful evening led by Mrs Smith where children who play an instrument, sing in the choir or play in the school band were able to share their musical talent with family and friends. The musical talent in our school is amazing and the children really did make us all proud.

Year 5 had their visit from the Fire Service this week. The fire engine was brought on site where the fire crew showed the equipment that they have to use. They also gave a talk about fire safety.

The Friends of OLOP are working hard behind the scenes to get prepared for our first every OLOP Fest where I'm sure we will all have a great time. If you haven't yet bought your tickets, please do. All funds raised help to support the children in receiving the best experiences and resources in school.

Just a reminder that we have our sports days next week. Year 3 – 6 on Monday starting at 9:15am and then Reception and Years 1 & 2 on Friday starting at 9:30am. Please ensure the children have a sun hat, plenty of water and sun cream applied.

Many thanks,

Mr Stopps

**Important June/July dates:**

**PLEASE SEE FULL CALENDAR OVERLEAF**

## ATTENDANCE MATTERS

### Class Attendance:

RHA—St Valentine —**97.8%**  
RHC—St Joseph — **95.5%**  
Yr1—St Faustina Kowalska —**93.1%**  
Yr1—St Bernadette —**99.2%**  
Yr2—St Teresa of Calcutta —**95.7%**  
Yr2—St Mary Magdalene —**95.2%**  
Yr3—St Paul —**95.9%**  
Yr3—St Martin de Porres —**95.2%**  
Yr4—St Peter —**98.5%**  
Yr4—St John-Bosco —**93.6%**  
Yr5—St Thomas More —**96%**  
Yr5—St Clare of Assisi —**98.3%**  
Yr6—St Maximilian —**96.1%**  
Yr6—St Josephine Bakhita —**95%**

**Whole School—95.5%**



# UPCOMING DATES

## Important May/June/July dates:

**Monday June 23rd**

Year 3, 4, 5 & 6 Sports Day—9:15am

**Tuesday June 24th**

Siblings/Class/Leavers Photographs

Year 5 to Burnham Grammar—Primary Liaison Day

**Wednesday June 25th**

4SS Ukulele Assembly—9am

**Thursday June 26th**

Mary's Meals—Wear an item of blue (see details in newsletter below)

**Friday June 27th**

Reception, Year 1 & Year 2 Sports Day—9:30am

**Saturday June 28th**

OLOP Fest—11am—2pm

**Monday June 30th**

Year 3 Violin Assembly—9:15am-9:45am

**Tuesday July 8th**

Year 6 Production to parents—1:30pm

Year 6 Production to parents—6pm

**Wednesday July 9th**

Year 6 Leavers Mass—10.30am—Parents Welcome

Year 6 Production to parents—6pm

**Friday 11th July**

Friends Coffee Morning—8:40am-10am

**Thursday 17th July**

Year 6 Leavers Disco—5:30pm– 7:30pm

**Friday 18th July**

End of Term - Nursery to Year 6 –3:25pm/3:30pm



# Our Lady of Peace Catholic Primary and Nursery School

## ACHIEVEMENT & SUCCESS



### This week's pupils of the week are:

NURSERY — **Ellie**

RHA—St Valentine—**Jaspreet**

RHC—St Joseph—**Timizo**

Yr1—St Faustina Kowalska—**Anaya**

Yr1—St Bernadette—**Willow**

Yr2—St Teresa of Calcutta—**Kehlani**

Yr2—St Mary Magadeline—**Anaiyah**

Yr3—St Paul—**Oscar**

Yr3—St Martin de Porres—**Frances**

Yr4—St Peter—**George**

Yr4—St John-Bosco—**Hugo**

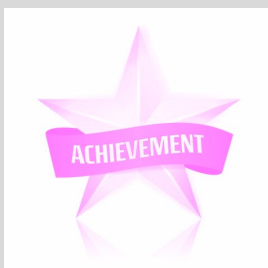
Yr5—St Thomas More—**Sienna**

Yr5—St Clare of Assisi—**Sannidhi**

Yr6—St Maximilian—**Mishka**

Yr6—St Josephine Bakhita—**Joseph**

**Congratulations to all of our pupils of the  
week for your hard work and achievements  
this week.**





# Our Lady of Peace Catholic Primary and Nursery School

## MY ACTIVE CALENDAR



Get Set 4  
Education

### My Active Calendar



It is always important to keep fit and healthy (and have fun doing it!)

Here is your very own Get Set 4 PE Active Calendar. Your challenge is to complete an active game every weekday throughout December.

Follow these steps to help you:

- Go to [www.getset4education.co.uk](http://www.getset4education.co.uk) and click on the Home Learning tab to see the Active Families Games.
- Pick an active game and play it.
- Write the name of the game you played onto your active calendar and enter a symbol to show how it made you feel. Remember, some days you may not enjoy a game but then love it on another day. Give games a go more than once.

[www.getset4education.co.uk](http://www.getset4education.co.uk)



Get Set 4  
Education

### My Active Calendar June 2025

Name: \_\_\_\_\_

MON

TUE

WED

THU

FRI

2	3	4	5	6
9	10	11	12	13
16	17	18	19	20
23	24	25	26	27
30				



I loved this  
game today.



I found this game  
'ok' today.



This isn't the  
game for me  
today.



[www.getset4education.co.uk](http://www.getset4education.co.uk)





# Our Lady of Peace Catholic Primary and Nursery School

## WAKE UP WEDNESDAY

**YouTube Kids promises a safe, child-centric experience with colourful visuals, age-filtered content, and robust parental controls. Designed to appeal to younger viewers, the app has grown rapidly, being used by tens of millions of children worldwide. But is it as safe as it seems?**

**Despite YouTube Kids' safeguards, reports have highlighted worrying issues, such as inappropriate content slipping through filters, subtle advertising, and the use of manipulative design to keep children engaged. Our guide explores how to navigate these pitfalls, offering practical advice for making sure children get the most from the platform – without the risks.**

At The National College, our WakeUpWednesday guides empower and equip parents, carers and educators with the confidence and practical skills to be able to have informed and age-appropriate conversations with children about online safety, mental health and wellbeing, and climate change. Formerly delivered by National Online Safety, these guides now address wider topics and themes. For further guides, hints and tips, please visit [nationalcollege.com](https://nationalcollege.com).

### What Parents & Educators Need to Know about YOUTUBE KIDS

As its name suggests, YouTube Kids is a child-friendly version of Google's online video-sharing platform. Its colourful user interface is designed with young people in mind, and it offers a curated, family-friendly experience with features like age-based content settings and parental controls.

**AGE RESTRICTION 4+**

#### WHAT ARE THE RISKS?

##### INAPPROPRIATE CONTENT BYPASSING FILTERS

YouTube Kids is less likely to show inappropriate material than YouTube, but there have been reports of the app showing age-inappropriate content to young viewers. One investigation found that YouTube Kids had shown videos that promote skin bleaching, weight loss, drug culture and firearms to children as young as two, as inappropriate content had bypassed the platform's algorithms and human moderators.

##### BE WARY OF ADVERTISING

Like Google's regular YouTube app, YouTube Kids features pervasive advertising before a video plays. While these adverts are designed to be family friendly and are subject to a strict review process, it's worth noting that YouTube Kids collects information around children's viewing to inform targeted content and advertisements.

##### DESIGNED TO BE ADDICTIVE

YouTube Kids is designed to be addictive. The platform's design features, such as the constant stream of new videos and the reward system of points or virtual stickers, can be very engaging and make it difficult for children to switch off. Research has shown that spending too much time using digital services such as YouTube can lead to screen addiction, affecting children's daily routines, studies, and even their social lives.

##### SETTINGS CAN BE CIRCUMVENTED

YouTube Kids offers built-in parental controls, enabling you to set screen time limits and curate the content children are able to view; however, children are often more tech-savvy than we think. They can easily bypass or tweak these settings if they have access to the associated Google account password, thereby exposing themselves to age-inappropriate and potentially dangerous content.

##### AI-GENERATED MISINFORMATION

There is also a risk of children accessing videos that contain disinformation and misinformation. A BBC investigation found that some YouTube channels are using artificial intelligence (AI) technology to create misleading 'scientific' videos that are recommended to children as educational content. These videos included conspiracy theories and ideas that lack scientific backing.

##### DATA COLLECTION RISK

While there are limits on the data that YouTube can collect on children under 13, children can still inadvertently give away sensitive information when using YouTube Kids. The platform collects data on children's viewing habits, content searches and location, which YouTube and third-party advertisers can use.

#### Advice for Parents & Educators

##### PARENTAL CONTROLS

YouTube Kids offers several settings that allow you to manage what content children can view. For example, you can choose what level of content you want them to access, such as 'Preschool' or 'Younger'. You can also turn off the search function, so that only those videos approved by the YouTube Kids team themselves will appear on a child's recommendations list.

##### SET TIME LIMITS

The built-in parental controls let you keep a tab on how long children spend watching videos. You can set a timer that limits screen time and notifies the YouTube Kids app once a specified length of time has been reached. It's also worth speaking to children about the dangers of spending too much time on YouTube, to ensure they remain focused on other, more important activities.

##### CHECK WATCH HISTORY

YouTube Kids has made it easy for you to keep an eye on what the children in your care have been watching on the app. By clicking on the 'Recommended' icon at the top right of the home screen, you can see which videos they've been viewing, and how much of each. If a child watches YouTube Kids while signed into a Google account, you can check their history through Google's 'My Activity' page.

##### WATCH TOGETHER

It's important that you try to make YouTube Kids a fun and positive experience for children. One way to do this is by introducing watching sessions, where you all gather around and share the most enjoyable videos that you have recently watched. This can be a great way of giving you both new things to talk about and of keeping an eye on what they're watching.

#### Meet Our Expert

Carly Page is an experienced journalist with more than 10 years of experience covering the technology industry. Previously a senior cybersecurity reporter at TechCrunch, Carly is now a freelance journalist, editor, and copywriter. Her bylines include Forbes, Techradar, iX, The INQUIRER, The Metro, Us Weekly, and WIRED.

**#WakeUpWednesday**

The National College

Source: See full reference list on guide page at <https://nationalcollege.com/guides/youtube-kids-2025>

[X @wake\\_up\\_weds](https://www.wake-up_weds.com) [f /www.thenationalcollege](https://www.thenationalcollege.com) [@wake.up.wednesday](https://www.wake.up.wednesday.com) [@wake.up.weds](https://www.wake.up.weds.com)

Users of this guide do so at their own discretion. No liability is entered into. Current as of the date of release: 18.06.2025



# **Our Lady of Peace Catholic Primary and Nursery School**

## **MARY'S MEALS**

**Dear Parents/ carers,**

**On the 26th June, children are being asked to wear a blue accessory and donate a pound for Mary's Meals. The money raised will be used for the Offertory at our School Feast Day Mass on the 9<sup>th</sup> July.**

**Thanks you for your continued support.**







# **Our Lady of Peace Catholic Primary and Nursery School**

## **VOLUNTEERS**

**We are currently looking for any volunteers who would be willing to come into school and do some gardening. This would entail maintaining the pots, weeding, tidying up the small garden areas outside Year 1 and the prayer garden.**

**Anyone willing to volunteer will have a DBS completed.**

**Please contact: [post@olopprimary.co.uk](mailto:post@olopprimary.co.uk)**

**Thank you**





# Our Lady of Peace Catholic Primary and Nursery School

## FRIENDS OF OLOP NEWS

### OLOP Fest

Not long to go now! It is only 1 week until OLOPFest on the 28<sup>th</sup> June and we are so excited to welcome you to our first ever Family Festival.



We have a fantastic music line up: Daft! the Haystacks Band, Sing4You Community Choir and our wonderful school choir are all performing and will be sure to provide and afternoon to remember.

We will also have bouncy castles, games, a splash zone, pocket money stall and lots of food and drink options, including BBQ, cookies & other sweet treats, ice creams, bubble tea and our OLOP Bar. Bring a picnic blanket or camping chair and settle in for an amazing afternoon.

Tickets for OLOP Fest are available through Ticket Tailor (using this link <https://buytickets.at/friendsofolop/1709972>) and our early bird tickets are priced at £5 each (for adults and children). Once our early bird tickets are sold out, tickets will be £8 for adults (children's price remains at £5). All tickets are subject to a 25p booking fee. Under 3's are free.

In order to put an event on like this, we need the entire school community to come together. We want to make OLOPFest the best event yet and to achieve that, we need lots of helpers. Signing up for one volunteer slot is all it takes to make a big difference. All money raised goes back into the school to benefit the academic and pastoral needs of all children.

You don't need any experience and lots of our stalls are cashless to make running them easier. So maybe sign up with a friend for some feel good fundraising fun! Please help us make it a day to remember! Sign up here <https://volunteersignup.org/37XAA>.

Thanks for your support and we look forward to seeing you all there!

### Friends of OLOP





# Our Lady of Peace Catholic Primary and Nursery School

## CONGRATULATIONS

Congratulations to Iga (2SS) who proudly recited the well-known Polish poem *Ptasie Radio* (*Birds' Radio*: a report style, dynamic poem about birds – full of onomatopoeias). Iga's parents are thrilled to share that not only was she awarded First Prize in her age category, but she also received a Special Judges' Award from one of the Judges, who said: *"Iga, I wanted to recognise you – truly recognise you. Why? For your imagination. For your musical imagination. There's no need for special props. (Then addressing the audience) Believe me, children have such powerful imagination – even when it comes to imitating birds. Believe in their power, and in the strength of their imagination."*

*Well done Iga.*







# Our Lady of Peace Catholic Primary and Nursery School

## CONGRATULATIONS

**Congratulations Sienna 5TH who was very lucky to receive through a ballot, tickets for the Garter Ceremony at Windsor Castle on the 16th June. It was a lovely experience for Sienna and a memory kept forever.**





# Our Lady of Peace Catholic Primary and Nursery School

## NEW PARENT FORUM FOR SLOUGH

contact For families  
with disabled children

### A new Parent Carer Forum for Slough

Are you a parent or carer of a child or young person 0 to 25 years who has special educational needs and or a disability living in Slough

Would you like to be involved in the design, development and implementation of services for your child or young person?

Would you be interested in how parent carer forums are involved with services locally, regionally and nationally?

If you are interested do come along to one of the virtual sessions

7<sup>th</sup> July 6pm to 7-30pm

8<sup>th</sup> July 10-00am to 11-30 am

9<sup>th</sup> July 12 noon to 1-30pm

You will need to book by emailing

[Catherine.ratcliffe@contact.org.uk](mailto:Catherine.ratcliffe@contact.org.uk)








# Our Lady of Peace Catholic Primary and Nursery School

## SEND SUPPORT

Please see flyer below regarding our upcoming workshops and courses from GEMS:



 01753 373 244 / 0800 999 1342  
weekdays 9am to 5pm  
 <https://www.gems4health.com>  
 [gems.4health@nhs.net](mailto:gems.4health@nhs.net)

GEMS is for children and young people who are diagnosed with, or who may have, autism and/or attention deficit hyperactivity disorder (ADHD). The service also supports parents and carers and is open to anyone living in Slough, Royal Borough of Windsor and Maidenhead or Bracknell Forest.

### UPCOMING WORKSHOPS AND COURSES

**Sensory Processing - Wednesday 4<sup>th</sup> June 7 to 8:30pm**  
**Autism Course - Wednesday 11th, 18th & 25th June - 7 to 9pm**  
**ADHD Course - Thursday 17, 24 June, and 1 July - 7 to 9pm**  
**Sleep - Autism and ADHD - Tuesday 17th June - 7 to 9pm**  
**Girls and Autism - Tuesday 10th June - 10am to 12noon**  
**Adolescence - Wednesday 2nd July - 10am to 12noon**  
**Managing Anxiety - Tuesday 8th July- 10 to 12noon**  
**Empowering Calm - Tuesday 15<sup>th</sup> July - 10am to 12noon**

**Visit our website to book your space - [www.Gems4Health.com](http://www.Gems4Health.com)**





# Our Lady of Peace Catholic Primary and Nursery School

## SEND NEWSLETTER

## Slough SEND newsletter

June 2025

*Keeping you connected*

**Slough**  
Borough Council

Contacting the SEND Team | Slough Borough Council Coffee Morning | Completion of Arbour Vale School's new classrooms for SEND pupils | Slough Children's Centres and Family Hubs SEND Stay and Play | Proposed SENCo Information Day for Schools at Arbour Park Stadium: calling all SENCo Professionals | Children's Centres and Family Hubs Year 5 SEND Roadshow | Hidden Disabilities Sunflower Scheme | Oral hygiene: Supervised Brushing Programme for early years settings and schools | Holiday planning for parents with children with SEND | Top Tips from parents | Going on holiday | What's on

### Welcome to the June's edition of your Slough SEND Newsletter!

In this edition, we update you on the very exciting news of the opening of four additional modular classrooms at Arbour Vale School, info on our extensive services provided from our Children's Centres and Family Hubs and an update to a forthcoming SENCo Information Day, that we are planning to run in September for schools. Also, as always in our issues, we offer a range of other helpful links to services and provisions, that you might find useful.

Thank you for taking the time to catch up with us. If you would like to make any contributions to future editions or just to share your news please get in touch [SENDnewsletter@slough.gov.uk](mailto:SENDnewsletter@slough.gov.uk). We would love to hear from you!

### Slough Borough Council Coffee Morning

Parents and Carers, Arbour Vale is delighted to invite you to an informal coffee morning at our school on Monday 23 June 2025, 9.30-11am. The event will be hosted by Slough Borough Council, with representatives from Slough Children's First service and Slough SEND and Inclusions Team.

This event will be an excellent opportunity for parents and carers to share experiences of SEND provision and engage in shaping the ongoing transformation of the service whilst enjoying a cup of tea



or coffee and engage in open conversations with senior leaders and representatives from organisations that support children with special educational needs.

The session will aim to:

- Provide an update on progress made so far in our transformation journey
- Listen to your views as parents and carers
- Open up a discussion around co-production and future involvement.

To help us plan appropriately, we kindly ask that you confirm your attendance as soon as possible by emailing [Manjula.Odedra@arbourvaleschool.org](mailto:Manjula.Odedra@arbourvaleschool.org).

If you have any questions about the morning, please don't hesitate to contact the school office.

### Contacting the SEND Team

There are two dedicated email addresses to help you contact us, and to help us effectively respond to you, we would ask that you please use the correct email address depending on the nature of your contact with us:

**[SEND\\_ECHNArequest@slough.gov.uk](mailto:SEND_ECHNArequest@slough.gov.uk)**  
This email is the address to send all your ECH Needs Assessment requests.

**[SENDteam@slough.gov.uk](mailto:SENDteam@slough.gov.uk)**  
This email is for all other enquiries.

Or call us on **01753 787676**.

**Join our mailing list, so you don't miss out on future updates on the Service!**

Do you want to receive copies of this newsletter on a regular basis? If so, please join our mailing list. Also, please encourage any parents you know who would find this newsletter interesting and useful. Colleagues working to support children and families are also encouraged to subscribe for direct updates and information. Please email us at [SENDnewsletter@slough.gov.uk](mailto:SENDnewsletter@slough.gov.uk) to be added to the mailing list.

We are working hard to improve the way we communicate with you and ensure that children and young people are at the heart of everything that we do!







# Our Lady of Peace Catholic Primary and Nursery School

**SEND NEWSLETTER**

## Completion of Arbour Vale School's new classrooms for SEND pupils

A group of pupils recently took a tour of their brand-new school building which has been taking shape at the back of Arbour Vale School over the last few months.

The addition is a single-story building with four bright and spacious classrooms to enable the school to provide places for additional children with SEND in years 4 to 6.

This addition to the school was made possible with an investment from Slough Borough Council of £4m, to support the number of children requiring a school place - without which many would have to be found in out of area schools.

The building has its own play area so that classes will be able to go outside when the weather is good. There are also toilets, sinks for hand washing, and plenty of storage for educational resources.

The official grand opening is planned for July, with the new classes already being moved into by eager pupils and staff. It has been a fantastic addition to the school and something that we can all be proud of. We wish Arbour children many



years of comfortable learning in their new space.

Neil Hoskinson, Associate Director of Education, and Inclusion at Slough Borough Council said "We are delighted that more young people will be educated at Arbour Vale School in the future, and in such wonderful classrooms. The use of wood and glass to create a light and spacious learning environment, that

uses cutting edge eco-friendly technology, is something that the council and the school have developed in close partnership and both can be rightly proud of the end result. I look forward to attending the formal launch in July but, more importantly, seeing young people educated every day in this great building."





# Our Lady of Peace Catholic Primary and Nursery School

## SEND NEWSLETTER

### Slough Children's Centres and Family Hubs SEND Stay and Play

On the 10 April we held our first holiday stay and play at Monksfield Way Children's Centre. Families identified that they would like a safe space for their children in the holidays.

The session was attended by five families with eight children, and was supported by a Childcare Professional and Outreach Worker, with our aim being to offer a safe space for children with SEND. The children could access both indoor and outdoor provision, as well as the session being an opportunity for parents to meet with other families.

The session was so successful that we repeated it the following week, and a decision has now been made to offer this during every school holiday.

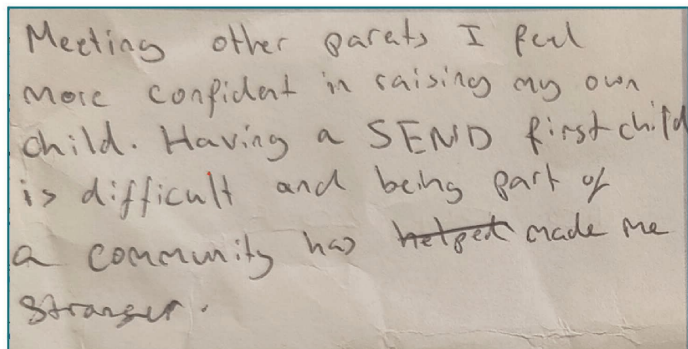
Our next session was held in the May half term where we offered the same provision, with the option for parents to stay longer using the

space for a picnic that was facilitated by the parents themselves.

If you would like to enquire about future stay and plays - please contact your local Family Hub for more details [Slough Information and Services Guide | Slough Children's Centres and Family Hubs](#).

Our hope is that whilst your children play, you are able to meet and

Feedback from one parent:



connect with other parents who can share their experiences, challenges, tips, and ideas or just feel part of a community where you gain support, and confidence as well as share a few laughs and smiles.

**'Perhaps the secret to living well is not having all the answers, but in pursuing unanswered questions in good company'**

*Rachel Remen*

### Proposed SENCo Information Day for Schools at Arbour Park Stadium: calling all SENCo Professionals

We are in the stages of planning a SENCo Information Day in September, that would give SENCos the opportunity to talk with different stallholders and learn about the services available across Slough.

This would also be an opportunity for SENCOs to speak to multi-agency professionals and learn more about their resources, strategies, processes, assessments, timelines, and support. It would be a good chance to share challenges, best practice, and tips amongst professionals, along with networking, connections, and hopefully meet some new friends

and colleagues from other areas.

Some of the areas we are hoping to bring together are:

- CAMHS, anxiety and depression pathway, neurodiversity service and eating disorder service
- Together As One or YES
- Detached Team
- SENDIASS
- EP, SALT, OT, Play therapists
- Local Offer
- SCF
- Short breaks
- Sports clubs and activities specific to SEND
- Counselling services
- Youth violence charities or

violence against parents organisations

- GEMS
- Specialist school staff eg. Arbour Vale/Littledown
- Work experience pathways for PIA
- Assistive technologies.

Keep an eye out in future editions for more information ahead of September's event!







# Our Lady of Peace Catholic Primary and Nursery School

## SEND NEWSLETTER

### Children's Centres and Family Hubs

At Slough Children's Centres and Family Hubs we know that having a child under five is a wonderful experience, but it can be a time when you have more questions than answers.

We offer a range of activities and events across the week from Monday to Friday, that include Play and Stays, NHS workshops and services for antenatal and postnatal parents, Library Services time, healthy eating and much much more.



Sometimes it is just nice to connect with new people, parents and carers who share some of the challenges and highs of life.

To register: [Complete the Slough Family Hub registration form online](#) or scan the QR code.



Please check out our 'what's on' section of [Slough Information and Services Guide | Slough Children's Centres and Family Hubs](#) for more details about our timetables.

#### Useful numbers:

Monksfield Way Children's Centre:  
01753 578691

Penn Road Children's Centre & Family Hub:  
01753 574420

Chalvey Grove Children's Centre & Family Hub:  
01753 574387

Yew Tree Road Children's Centre:  
01753 527571

Romsey Close Children's Centre & Family Hub:  
01753 540797

### Year 5 SEND Roadshow



Are you a parent/carer or family member of a child in Year 5 with Special Educational Needs (SEND)? Do you have any questions, or want to find out how pupils with SEND are supported in secondary schools in Slough? Pop along to our roadshow where there will be representatives from Slough secondary schools, and services that support parents/carers and young people with SEND.



**Tuesday 24 June 2025**

at Arbour Park Stadium, Arbour Park,  
Slough, SL2 5AY, between 1-3.30pm

For further information email: [ISSadmin@slough.gov.uk](mailto:ISSadmin@slough.gov.uk)

[www.slough.gov.uk](http://www.slough.gov.uk)  
**Slough**  
Borough Council



# Our Lady of Peace Catholic Primary and Nursery School

## SEND NEWSLETTER

### Hidden Disabilities Sunflower Scheme

#### What is the Hidden Disabilities Sunflower?

The Hidden Disabilities Sunflower is a simple tool for you to voluntarily share that you have a disability or condition that may not be immediately apparent - and that you may need a helping hand, understanding, or more time in shops, at work, on transport, or in public spaces.

**Just because you can't see it, doesn't mean it is not there.**

Globally 1 in 6 of us live with a disability. That is approximately 1.3 billion people.

But while some of us experience a disability that is visible, many have a non-visible condition or experience a combination of both visible and non-visible conditions.

These disabilities can be temporary, situational, or permanent. They can be neurological, cognitive, and neurodevelopmental as well as physical, visual, auditory and include sensory and processing difficulties. They can also be respiratory as well as chronic health conditions such as arthritis and diabetes, chronic pain, and sleep disorders.

#### Making the invisible visible

As diverse as these conditions are, so are your individual access needs and the barriers you face in your daily life. So, you can opt to wear the Sunflower to discreetly be seen in shops, at work, on transport, or in public spaces.

Please visit [www.hdsunflower.com/uk](http://www.hdsunflower.com/uk) for further information.



### Oral hygiene: Supervised Brushing Programme for early years settings and schools

#### Community Dental Services is commissioned by Slough Borough Council to offer a Supervised Brushing Programme.

The programme is a preventative toothbrushing programme designed to address oral health inequalities by helping young children to develop positive oral health skills for life.

Brushing each day at school is effective for preventing tooth decay and can establish life-long behaviour to promote oral health.

The funded programme is a targeted programme so only run in targeted settings.

If you would like to know more about the programme and see if your setting is eligible then please email the team on [Sophie.Burton@cds-cic.co.uk](mailto:Sophie.Burton@cds-cic.co.uk) or [Amy.Labourn@cds-cic.co.uk](mailto:Amy.Labourn@cds-cic.co.uk)

For those who aren't eligible the team can still offer support, guidance, and training to self-fund your own programme with your setting.

Find out more about the supervised toothbrushing programme with this short [video](#).

There is also more information here: [www.communitydental services.co.uk](http://www.communitydental services.co.uk)







# Our Lady of Peace Catholic Primary and Nursery School

## SEND NEWSLETTER

### Holiday planning for parents with children with SEND

As we fast approach the summer season, thoughts for many of us turn to getting away for a bit and the summer holidays!

Taking your child away can be overwhelming, especially if they are upset with changes to their normal routines or new or strange places. Below is some helpful advice and tips on how to prepare your family for that often, long awaited holiday away. Whatever you are planning, we hope that you make some beautiful, fun memories and take a lot of pictures!

#### Top Tips from parents Going on holiday

##### PREPARATION:

Create a story about going on holiday using real photos.  
Have a visual countdown to help understanding of when that could include a tick list of tasks to do.  
Consider appropriate travel insurance.  
Create a plan for the day of travel.  
Use BA Disability service to pre book seats on the plane and pre book special assistance for the airport.  
Apply for a sunflower lanyard.  
Think ahead such as knowing where toilets are at the airport or what to do if a delay.

##### PACKING:

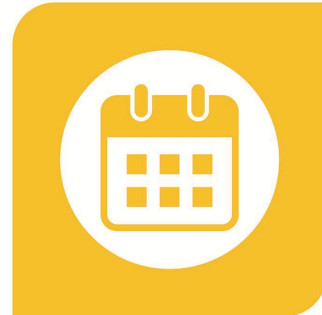
Involve the person who has Down's syndrome in packing.  
Think about what to put in hand luggage for the journey and suitcase for the stay.  
Consider what is needed with regards to occupation, soothers, continence, medication, snacks, sensory aids.  
Think about taking food that could be hard to find.

##### THE JOURNEY:

Use the social story/visuals to remind them what is happening.  
If needed, free wheelchairs are provided near trolleys at the airport.  
Ensure snacks, food and drink are to hand.  
Have electronic devices charged and available plus any aids/activities that may be useful.

##### ON HOLIDAY:

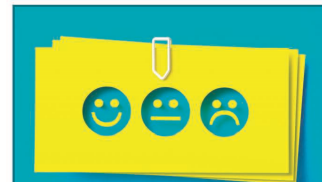
Identify key person at accommodation and let them know child's needs.  
Identify a quiet space for when needed.  
Have a daily visual schedule.  
Avoid too many activities in one day and have an opt out option.  
Consider dividing care giving amongst adults.



### What's on

Slough Information and Services  
Guide | Special Educational Needs  
and Disabilities - Slough SEND  
Local Offer

We have a full calendar of events, that can be found via your local offer page [Slough Information and Services Guide | What's On](#) which is updated regularly and can be searched by calendar date.



#### Newsletter feedback:

this is your newsletter!

If you would like to suggest any changes to this newsletter, see additional information, be added to the mailing list, and/or give feedback, please email [sendnewsletter@slough.gov.uk](mailto:sendnewsletter@slough.gov.uk)

Thank you for taking the time to catch up with us. If you would like to make any article contributions, in future editions, get in touch [SENDnewsletter@slough.gov.uk](mailto:SENDnewsletter@slough.gov.uk). We would love to hear from you!





# Our Lady of Peace Catholic Primary and Nursery School

## INFORMATION FROM BERKSHIRE HEALTHCARE

### Are you confident in your continence?

**NHS**  
Berkshire Healthcare  
NHS Foundation Trust

#### Do you...

- have to rush to the toilet?
- experience bladder leaks?
- struggle with constipation?

The Bladder and Bowel  
Service is coming to a  
location near you!

Come and talk to us on the  
Health Bus for free advice.

#### Waitrose Bracknell

Thursday 19 June  
10am – 2pm



Scan me

Scan the **QR code** or go to the address  
below to find out more about our service:

 [berkshirehealthcare.nhs.uk/continence](https://berkshirehealthcare.nhs.uk/continence)



# Our Lady of Peace Catholic Primary and Nursery School

## INFORMATION FROM BERKSHIRE HEALTHCARE



Information for parents/carers



Berkshire Healthcare  
NHS Foundation Trust

## Let's talk about **Wee and poo**

The Paediatric Bladder and Bowel Service  
is coming to a location near you!

**Does your child struggle to  
poo? Are they wetting  
themselves? Do you need  
support with toilet training?**

The Paediatric Bladder and  
Bowel Service is coming to  
a location near you!

Come and talk to us on the  
Health Bus for free advice.

**Waitrose Bracknell**

**Thursday 19 June  
10am – 2pm**



[berkshirehealthcare.nhs.uk/continence](https://berkshirehealthcare.nhs.uk/continence)



# Our Lady of Peace Catholic Primary and Nursery School

## INFORMATION FROM BERKSHIRE HEALTHCARE



Berkshire Healthcare  
NHS Foundation Trust

### Are you **confident** in your **continence?**

**Do you have to rush to the toilet?**  
**Experience bladder leaks?**  
**Struggle with constipation?**

The Bladder and Bowel  
Service is coming to a  
location near you!

Come and talk to us on the  
Health Bus for free advice.

**ASDA Slough**

**Monday 16 June 2025**

**10am – 2pm**



Scan me

Scan the **QR code** or go to the address  
below to find out more about our service:

 [berkshirehealthcare.nhs.uk/continence](https://berkshirehealthcare.nhs.uk/continence)



# Our Lady of Peace Catholic Primary and Nursery School

## INFORMATION FROM BERKSHIRE HEALTHCARE



## Let's talk about **wee and poo**

**Does your child struggle to poo?**

**Are they wetting themselves?**

**Do you need support with toilet training?**

The Paediatric Bladder and Bowel Service is coming to a location near you!

Come and talk to us on the Health Bus for free advice.

**ASDA Slough**

**Monday 16 June 2025**

**10am – 2pm**



**Scan me**

Scan the **QR code** or go to the address below to find out more about our service:

 [berkshirehealthcare.nhs.uk/continence](https://berkshirehealthcare.nhs.uk/continence)



# Our Lady of Peace Catholic Primary and Nursery School

## FAMILY FUN DAY

Local sports & activities clubs

Scavenger Hunt with Prizes

Burnham Health Promotion Trust

Sunday **JUNE 22nd**  
@Burnham Park Hall

Free Mini Sessions!

Burnham Health Promotion Trust invite you to a..

# FAMILY DAY

Fruit & Vegetable Tasting

**Come down after lunch and join us from 1 - 4pm!**

A free Family Day with the focus on promoting local sports & activity groups, healthy eating, sharing local SEN provisions and helping social interactions in and outside of the home. What better way to do this than by having a fun afternoon together!



**Cippenham Table Tennis Club - Phoenix Rugby Club**  
**Burnham & Iver Ladies Hockey Club - Bucks Family Hub**  
**Athena Angels Gymnastics - DNC Dance Studio**  
**Prodigy Dance Studio - Shining Star Productions**  
**The Autism Group - Burnham Beeches Team**  
**Inspire Sports Academy - Girlguiding - And More!**



**SUPPORTED BY** Burnham Parish Council - Bluebird Care - Tesco Taplow

For more information contact Gemma on 01628 661441 or [gemma@bhpt.org.uk](mailto:gemma@bhpt.org.uk)





# Our Lady of Peace Catholic Primary and Nursery School

## ADMINISTRATIVE OFFICER AT OLOP



### Our Lady of Peace Catholic Primary and Nursery School 'With Christ in our hearts, together we grow'

Headteacher: Mr N Stopps

Derwent Drive, Slough  
Berkshire, SL1 6HW  
Tel: 01628 661886

---

#### Administrative Officer

**Required to start September 2025**

**Fixed Term, term-time only contract for 2 terms from September 2025, in the first instance**

**Job Salary: based on experience: Pay Level 4, SCP 8 – 12 (£25,992 - £27,711 plus local fringe weighting, pro rata)**

**Hours: Part-time, 20 hours per week, mornings only, Monday - Friday**

The Headteacher and Interim Executive Board are seeking to appoint an Administrative Officer to join our friendly Admin Team, who will be responsible for recording, monitoring and reporting on attendance to support the Headteacher to improve attendance levels and reduce persistent absence. The role will involve working with children, parents and carers and you will be responsible for the administrative support needed to promote whole school attendance and achievement. The successful candidate will also support and promote pupil welfare within the school, ensuring that medical records and health care plans are kept up to date and providing first aid. In return we offer the opportunity to work in an innovative and supportive environment, working as part of a wider team of school based and external professionals.

The successful candidate must have relevant experience of working with young people within education or be able to offer evidence of ability to succeed in this role.

In return we offer:

- A positive and caring ethos.
- A team of hardworking, dedicated and friendly staff where everyone is valued.
- A commitment to continuing professional development
- Exceptional behaviour
- Employee Wellbeing and Assistance Scheme
- Continuing professional development (CPD)
- On-site parking
- Outside area to enjoy lunch in the Summer
- Catering facilities (home cooked & reasonably priced)
- A supportive Senior Leadership team

Email: [post@olopprimary.co.uk](mailto:post@olopprimary.co.uk)  
<http://www.olopprimary.co.uk>

*In partnership with The Diocese of Northampton and Slough Borough Council, Department of Education  
Our Lady of Peace Catholic Primary and Nursery School has a commitment to safeguarding and promoting the welfare of children*



We're working  
towards Artsmark  
Awarded by Arts  
Council England



Artsmark  
Silver Award  
Awarded by Arts  
Council England



# Our Lady of Peace Catholic Primary and Nursery School

## ADMINISTRATIVE OFFICER AT OLOP CONTINUED

Visits by prior arrangement are warmly welcomed. Further details and application forms are available on our website [www.olopprimary.co.uk](http://www.olopprimary.co.uk) If further information is required, please contact Mrs Linda Shoard: [sbm@olopprimary.co.uk](mailto:sbm@olopprimary.co.uk)

Only applications submitted on the School's (CES) application form will be accepted and can be emailed.

**Closing date: Friday 27<sup>th</sup> June 2025**

**Interview date: Tuesday 1<sup>st</sup> July 2025**

Applications from all faiths welcome. Applicants may be called to interview prior to the closing date.

*The school is committed to safeguarding and promoting the welfare of children and young people and expects staff and volunteers to share this commitment. Appointment is subject to a satisfactory enhanced DBS disclosure and pre-employment checks.*

Email: [post@olopprimary.co.uk](mailto:post@olopprimary.co.uk)  
<http://www.olopprimary.co.uk>

*In partnership with The Diocese of Northampton and Slough Borough Council, Department of Education*  
Our Lady of Peace Catholic Primary and Nursery School has a commitment to safeguarding and promoting the welfare of children





# Our Lady of Peace Catholic Primary and Nursery School

**MADE IN BGS**

SUBJECTS  
ON SHOW:

D&T

ART

MUSIC

DRAMA

ENGLISH

DANCE



*Passion*  
*'Ignite Your Creativity'*

**Made In BGS**  
**A SHOWCASE OF THE ARTS**

**FRIDAY 4<sup>TH</sup> JULY 2025**  
**5PM - 7PM**

**THERE WILL ALSO BE MARKET STALLS ON THE NIGHT SELLING:**

**JEWELLERY**

**CROCHET**

**LASER  
CUTTING**

**HENNA**

**& MUCH  
MORE...**

**Burnham Grammar School | Hogfair Lane, | SL1 7HG**





# Our Lady of Peace Catholic Primary and Nursery School

## CHILD'S BIBLE OFFER



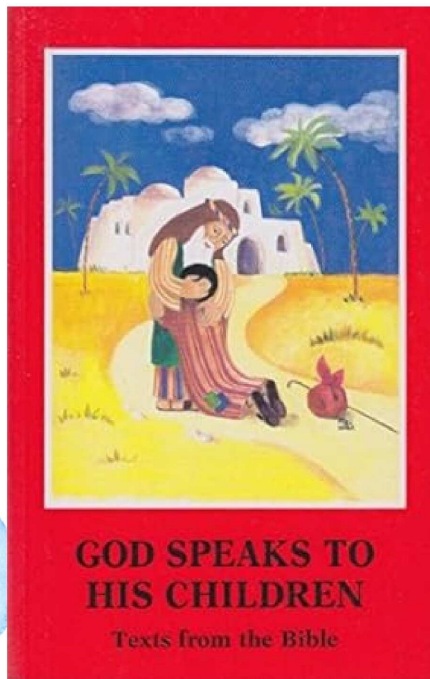
# CHILD'S BIBLE ACN UK SUMMER OFFER!

**BUY ACN'S CHILD'S BIBLE STORY BOOK FOR  
£3.00 PER COPY OR CLASS SETS OF 30 FOR £84.  
. OFFER VALID UNTIL JULY 16<sup>TH</sup> 2024.**

Help your children engage with the treasures of the bible and help children around the world have their own copy for free. Every book sold in the UK enables ACN to send 3 free copies to children in ACN projects.



**ACN**



To access this special offer  
please order by emailing  
[teresa.kehoe@acnuk.org](mailto:teresa.kehoe@acnuk.org)

Limited number of copies available  
so first come first served.



# Our Lady of Peace Catholic Primary and Nursery School

## CHURCH BULLETIN



### Our Lady of Peace & St. Andrew's Church Parish Newsletter



## The Most Holy Body & Blood of Christ (C)

Sunday  
Missal  
Page 453

**FIRST RECONCILIATION & FIRST HOLY COMMUNION CERTIFICATES 2025:** We warmly welcome all children and their families to the 9.30am Corpus Christi Mass at Our Lady of Peace Church. During this meaningful celebration, we will honor the children as they receive their First Reconciliation and First Holy Communion certificates.

**Following the Mass,** please join us for a light reception with bring-and-share finger foods and snacks to celebrate together. Let us keep our young communicants and their families in our thoughts and prayers as they mark this important milestone in their faith journey.

Mass Times & Intentions					
Sat	21 <sup>st</sup> Jun	OLOP	6 pm	McCann Family INT (O'Donnell) Thanksgiving for Teresa & Andrzej Skroś 40 <sup>th</sup> Wedding Anniversary INT (Skroś Family)	
Sun	22 <sup>nd</sup> Jun	OLOP	9.30	Bridie O'Connor INT (R. Group) James Sugrue RIP (Mary Barker)	
		St. A	11.30	Carmel Karunaratna RIP (Karunaratna Family & Sepala) Sr Mary Regina Corrigan RIP Birthday Remembrance (Shelagh)	
Mon	23 <sup>rd</sup> Jun	OLOP	9.30	Paddy Conroy RIP (Eileen Conroy) Richard Bamber RIP Birthday Remembrance (Bamber Family)	
Tue	24 <sup>th</sup> Jun	OLOP	9.30	Lawrence Lobo RIP (Lobo Family) Kathleen Rumble Birthday INT (Val Warner) Martin Almeida RIP Anniversary (Almeida Family)	
			7 pm	<b>The Nativity of St. John the Baptist (Solemnity)</b> <b>People of the Parish</b>	
Wed	25 <sup>th</sup> Jun	OLOP	9.30	Jean Gompertz & Family INT (Chritina)	
Thur	26 <sup>th</sup> Jun	St. A	9.30	Keeley (Foundation)	
Fri	27 <sup>th</sup> Jun	OLOP	9.30	Emma Basey INT (John Basey)	
			7 pm	<b>The Most Sacred Heart of Jesus (Solemnity)</b> <b>People of the Parish</b>	
Sat	28 <sup>th</sup> Jun	OLOP	10.00	Farrell (Foundation)	
			2 pm	<b>Mass for the Sick &amp; Elderly</b>	
			6 pm	Lisa Timms & Family INT (R. Group)	
Sun	29 <sup>th</sup> Jun	OLOP	9.30	Mary Lawlor RIP Birthday Remembrance (Goldberg) Silvia Fortino RIP (Farrugia Family) James Sugrue RIP (The OLOP Choir)	
		St. A	11.30	Prithi Mascarenhas INT (R. Group)	

✠ **SOLEMNITY OF THE NATIVITY OF SAINT JOHN THE BAPTIST**  
Masses will be celebrated on **Tuesday, 24<sup>th</sup> June** at 9:30am and 7:00pm in Our Lady of Peace Church.

✠ **SOLEMNITY OF THE MOST SACRED HEART OF JESUS**  
Masses will be celebrated on **Friday, 27<sup>th</sup> June** at 9:30am and 7:00pm in Our Lady of Peace Church.

**MASS FOR THE SICK & ELDERLY:** A special mass for the Sick will be held on **Saturday, June 28<sup>th</sup> at 2pm in St Andrew's**. All are welcome to join in prayer for healing and support. We can arrange for transport; please contact the parish office at 01628 605764.

**CONGRATULATIONS:** **Zuzanna Katarzyna Rycek** who will be baptised on Saturday, 28<sup>th</sup> June. Please keep Zuzanna, her parents, Grandparents and Godparents in your prayers.

ADDRESS: THE PRESBYTERY, LOWER BRITWELL ROAD, SLOUGH, SL2 2NL  
☎ 01628 605764 ✉ [office.ourladyofpeace@northamptondiocese.org](mailto:office.ourladyofpeace@northamptondiocese.org)

WEBSITE: [WWW.OURLADYOFPEACERC.ORG](http://WWW.OURLADYOFPEACERC.ORG)

#### OFFERTORY COLLECTION

Loose Collection: £726.90  
Sunday Tea & Coffee: £20  
DONA Plate: £122.88



#### MASS SCHEDULE

Mondays – Wednesdays & Fridays  
OLOP @ 9:30am  
Thursdays St Andrews @ 9:30am  
Saturdays OLOP @ 10:00am

#### WEEKEND MASSES

Saturdays Vigil OLOP @ 6:00pm  
Sundays OLOP @ 9:30am  
St Andrews @ 11:30am

#### MORNING PRAYER

Mon, Tue, Wed, Fri OLOP @ 9:15am  
Saturdays OLOP @ 9:45am  
Thursdays St. Andrews @ 9:15am

#### ADORATION

Mon, Tue, Wed, Fri OLOP @ 8:15am  
Saturdays OLOP @ 8:45am  
Thursdays St. Andrews @ 8:30am

#### PARISH INFORMATION

**Parish Priest:** Rev. Anthony Dampson, SMA

**Assistant Priest:** Rev. Amalraj Lawrence, SMA

**Deacon:** Rev. Deacon Michael Ossei-Williams

**Secretary:** Mrs. Venecia Godinho  
☎ 01628 605764

**Lead Sacristan:** Ms. Alma Pepaj

**Safeguarding:** Mrs. Mairin Comfort  
☎ 07456 948001 /  
✉ [safeguarding.oloop@northamptondiocese.org](mailto:safeguarding.oloop@northamptondiocese.org)

**Our Lady of Peace Catholic Primary & Nursery School**  
☎ 01628 661886

**All bookings for St Andrew's**  
Please contact the bookings secretary on ☎ 07546 710834.





# Our Lady of Peace Catholic Primary and Nursery School

## CHURCH BULLETIN CONTINUED

### VACANCY

**ADMINISTRATION OFFICER:** Required to start **September 2025** at **Our Lady of Peace Catholic Primary School**.

**Salary:** Based on experience - Pay Level 4, SCP 8-12 (£25,992 - £27,711 plus local fringe weighting, pro rata)

**Hours:** Part-time, 20 hours per week, mornings only (Monday to Friday)

Only applications submitted on the School's **(CES) application form** will be accepted and can be emailed.

Visits are warmly welcomed by prior arrangement. Further details and application forms are available on our website [www.oloopprimary.co.uk](http://www.oloopprimary.co.uk)

For further information, please contact **Mrs. Linda Shoard** at: [sbm@oloopprimary.co.uk](mailto:sbm@oloopprimary.co.uk)

**Closing date:** Friday 27<sup>th</sup> June 2025

**Interview date:** Tuesday 1<sup>st</sup> July 2025

Applications from all faiths welcome. Applicants may be called to interview prior to the closing date.

### VOLUNTEER GARDENERS NEEDED – OUR LADY OF PEACE SCHOOL:

We are looking for any gardeners who would be willing to come into school on a regular basis to help maintain flower beds, weeds, and pots.

If anyone is interested, we can arrange for a DBS check so that they can work unattended. We simply need some assistance with ongoing maintenance and thought there may be a parishioner who enjoys gardening and would be willing to help.

If you are interested or would like more information, please contact the school office. Your help would be greatly appreciated!

**VOLUNTEERS NEEDED – FOOD PACKING IN SLOUGH:** We are looking for volunteers to help with food packing for a local charity in Slough on **Friday evenings**, for approximately **one hour from 9:30 pm**.

If you are able to assist or would like more information, please contact **Cedrica Lobo** at **07767 477402**. Your support would be greatly appreciated!

### OLOPFEST – OUR FIRST FAMILY FESTIVAL! 🎉

📍 **Our Lady of Peace School**

📅 **Saturday 28<sup>th</sup> June** ⌚ **From 12 noon**

Join us for an afternoon filled with **live music, food, and family fun** at our first-ever OLOPFest! Expect **bouncy castles, splash zone, games, treats**, and a great mix of food including BBQ, sweet stalls, ice cream, bubble tea, wood-fired pizza, and more! 🍷🍷🍷

🎵 **Live music line-up includes:**

12.15pm – School Choir

1.00pm – Sing4You Community Choir

2.15pm – The Haystacks Band

3.30pm – !Daft!

🎫 **Tickets:** £5 early bird (adults & kids) – then £8 for adults (£5 children) - Under 3s go FREE | 25p booking fee

📖 Book here: [buytickets.at/friendsolop/1709972](http://buytickets.at/friendsolop/1709972)

🧺 **Bring a picnic blanket or chair – we can't wait to see you there!**

**RETIRING COLLECTION:** Next weekend, a retiring collection will be held for the **Peter's Pence**. This is a mandatory collection for the Holy See.

The retiring collection of the **Day for Life** amounted to **£209.32**. We are very grateful for your continued support.

### DECEASED

✝ Please pray for **Marie Oke RIP** who passed away last week. Details of her Funeral are currently unavailable. Marie was a dedicated teacher at Our Lady of Peace School and St Mary's Catholic Primary School in Maidenhead, before moving to Bicester due to ill health.

May her soul and the souls of all the faithful departed rest in peace, Amen.

### AN EVENING OF PRAISE 2025

*The Parish Church of Our Lady Immaculate and Saint Ethelbert's presents an Evening of Praise 2025*

Join us for a Spirit-filled **Evening of Praise, Worship, and Ministration** in support of the **Church Refurbishment Project** of Saint Ethelbert's in Slough.

**Please note the updated venue:** The event initially scheduled to take place in Saint Joseph's secondary school is now taking place at **Saint Ethelbert Church, Slough**.

📅 **Date:** Saturday, 28<sup>th</sup> June 2025 ⌚ **Time:** 6:00 pm

🎫 **Tickets:** £5

RSVP: 📞 Vicky – 07342 341100 📞 Russel – 07405 085613

📞 Tania – 07405 023032

Come and lift your heart in worship as we gather as one community to praise God and support a noble cause. All are welcome!

### PARISH PILGRIMAGE TO MEDJUGORJE: 27<sup>th</sup> February – 5<sup>th</sup> March 2026:

We invite you to join our parish pilgrimage to Medjugorje, a place of powerful Marian apparitions since 1981. Medjugorje, a renowned Marian shrine in Bosnia-Herzegovina, has welcomed over 40 million pilgrims since 1981, offering spiritual renewal, healing, and hope. This pilgrimage includes a rare chance to stay with one of the visionaries.

**Fr Amal** will accompany us as Spiritual Director, providing daily Mass, prayer, and guidance throughout the trip.

**Package includes:**

- 6 nights in a private room with a visionary
- All transfers (including UK)
- Breakfast & dinner with wine daily
- Licensed Catholic guide
- Visit to Mostar or Community Cenacolo
- Private meeting with a visionary
- Luggage handling & tips
- Backpack provided

**Cost:** £690 sharing / £855 single (flights separate; prices may vary).

To register or ask about financial help, **contact Christina:**

**Text 07990 655471** or email [christina@dh-duzz.com](mailto:christina@dh-duzz.com)

Join us for a powerful spiritual journey!

### UPCOMING KEY DATES

13 Sept Parish Tea Party

11 Oct Parish Liturgy Conference

✝ **GO IN PEACE**

**Sign Up Now >**  
for online newsletter



Bank: NatWest Sort Code: 60-06-11

Account Number: 46716203 Account Name: RCDN Our Lady of Peace.